



Ronald Weinand, D.P., has been an active collector of German war memorabilia for the past 25 years. Mr. Weinand is currently a practicing hospital pharmacist and a pharmaceutical consultant for the state of Illinois. He serves as associate curator of the All Wars Museum at the Illinois Veterans Home in Quincy, Illinois. His education consists of a B.S. degree from The St. Louis College of Pharmacy and post-graduate work in associated fields. He has contributed to many reference works on German militaria and is a member of the Ohio Valley Military Society.



Terry Goodapple has been a history buff and military collector for almost twenty years. German helmets and daggers are his main collecting interests. He has worked as an operations analyst for the Federal Government for 8 years and resides in Bloomington, Illinois. He has a B.A. degree in sociology from Quincy College. He is a member of the Ohio Valley Military Society.

# German Helmets 1933 — 1945



## A Collector's Guide

by

T. V. Goodapple and R. J. Weinand



# German Helmets 1933 — 1945

## A Collector's Guide

by

T. V. Goodapple and R. J. Weinand



First edition limited to 1500 copies.  
Published by the authors in Quincy, Illinois.

Copyright © 1981 by Terry Goodapple and Ronald Weinand.  
All Rights in this book are reserved. No portion may be reproduced in any form without written permission from the authors.  
For information write to Terry Goodapple and Ron Weinand, P.O. Box 323, Quincy, Illinois 62306-0323.

**DEDICATED TO OUR WIVES AND FAMILIES**



## CONTENTS

Dedication .....	2
Contents .....	3
Introduction .....	4
Acknowledgements .....	5
CHAPTER I Identification and Classification .....	6
The Shell .....	6
The Paint .....	12
The Liner .....	13
The Chinstrap .....	15
The Insignia .....	17
CHAPTER II Condition and Grading Guide .....	23
CHAPTER III Pricing and Photographs .....	25
Army (Heer) H1 to H16 .....	26
Air Force (Luftwaffe) L1 to L13 .....	42
SS SS1 to SS8 .....	55
Navy (Kriegsmarine) K1 to K6 .....	63
Police (Polizei) P1 to P15 .....	69
Zivil Und Politisch (Civil and Political) ZP1 to ZP26 .....	84
Camouflage C1 to C17 .....	110
Miscellaneous M1 to M14 .....	127
Bibliography .....	141
Colophon .....	142



## INTRODUCTION

The German steel helmet is one of the most collectable of all war souvenirs. Used throughout most of the twentieth century, its distinctive design has proven effective for the wearer and attractive to the collector. Because of the countless variations, collecting these helmets offers a lifetime hobby. However, the tremendous recent escalation in value of these collectables has spawned many reproductions, and the collector must arm himself with a thorough knowledge of these helmets. This book will offer some thoughts on the various aspects of the German steel helmet and will provide the reader with a basic understanding of this challenging subject.

The steel helmet, or Stahlhelm, was the trademark of the German soldier in two World Wars. It is widely recognized, and its image can conjure up a multitude of emotions. The sight of the Stahlhelm can evoke terror or hatred, honor or pride. It may be associated with death or destruction, glory or strength. To the knowledgeable collector, it represents all of these and more—a piece of history, a satisfying hobby, and a sound investment.

The young American soldiers who fought the war in Europe were fighting for a common cause, but each soldier was an individual in his own right. Some wanted no reminders of what they had seen and done, wanting only to forget. Others felt it was the one big event in their lives, and desired a remembrance of that time. The German helmet satisfied this "desire" by being symbolic of the enemy, readily available, and durable enough to withstand the long trip home. The old saying "To the victor go the spoils" was never more true than for the veterans of World War II. Much of the symbolism of Hitler's Germany has found its way to the United States via the GI, and it is to these men we collectors owe our thanks.

Whether you consider yourself a helmet collector or not, if you are interested in militaria, you will more than likely encounter a German helmet or two during your collecting career. It is probably impossible to ever have a truly complete helmet collection, as there is no way to obtain, or even identify, all of the different types, sizes, and styles of German helmets. This book is not an attempt to do that, rather, it is intended as a ready reference for both the beginner and the advanced collector, as well as for those who collect or deal in other types of militaria. There are many helmets and many collectors, and certainly not everyone will agree on prices, condition, or rarity. It is the hope of the authors that this book will help identify and evaluate a large variety of helmets. We have attempted to include as many examples of German helmets as possible, fully realizing the contents could not be all inclusive. If you have a helmet that is not in the book, chances are, it is either very rare, not original, or yet another example of the many variations of the German steel helmet.

## ACKNOWLEDGEMENTS

This book would not have been possible without the assistance and cooperation of a few special and dedicated individuals. The authors wish to express their sincere gratitude and appreciation to those who contributed their time, skills, and expertise in writing this book. We acknowledge, with great honor and respect, the efforts of these fellow collectors:

**WILLIAM R. MAERTZ** — helmet collector, artist, and photographer. A special thanks to Bill for providing all of the art work, many pictures of his fine collection, and assistance with the cover. His constant support, ideas, and suggestions proved invaluable.

**JAMES H. PETERSON** — headgear collector. His expertise and advice turned amateurs' ideas into a professional product. Our thanks to Jim for freely sharing his talents and time.

**JAMES BANDY** — helmet collector. Our thanks to Jim for his opinions, his pictures, his unending cooperation, and his encouragement.

**ALBERT E. BARROWS** — "Helmet King of the East". Our thanks to Al for sharing his collection and his wisdom.

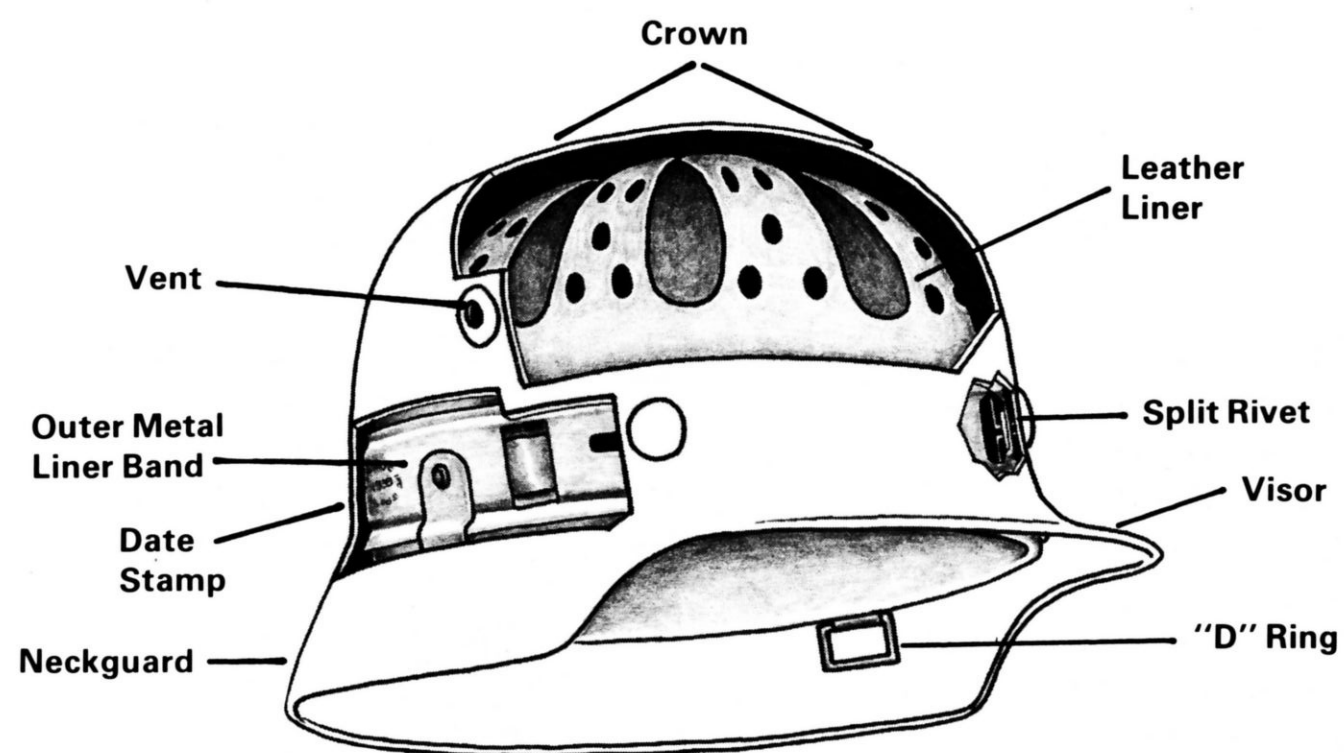
Helmets pictured in this book are from the following collections:

James Bandy  
Albert E. Barrows  
Dr. Ronald Distelhorst  
Terrance V. Goodapple  
William R. Maertz  
James H. Peterson  
Jerry Sanders



## IDENTIFICATION AND CLASSIFICATION

A German helmet, is a German helmet, is a German helmet—to paraphrase an old saying. Even if you believe that, maybe you will be inclined to read this chapter out of curiosity. Otherwise, you can flip ahead to Chapter III to look at the pictures. However, a little background information is essential to any endeavor, and identifying and classifying a German helmet is no exception. It is particularly useful in attempting to distinguish an original helmet from an imitation. Mere comparison with a picture is sometimes not enough. A little knowledge will help you assess any helmet, even if it does not match a picture in this book or elsewhere. Certain combinations of characteristics are “right”, in spite of the many variations and modifications encountered. Knowing what to look for gives you an edge and permits you to make an educated guess at identifying a piece that is not otherwise readily recognizable.

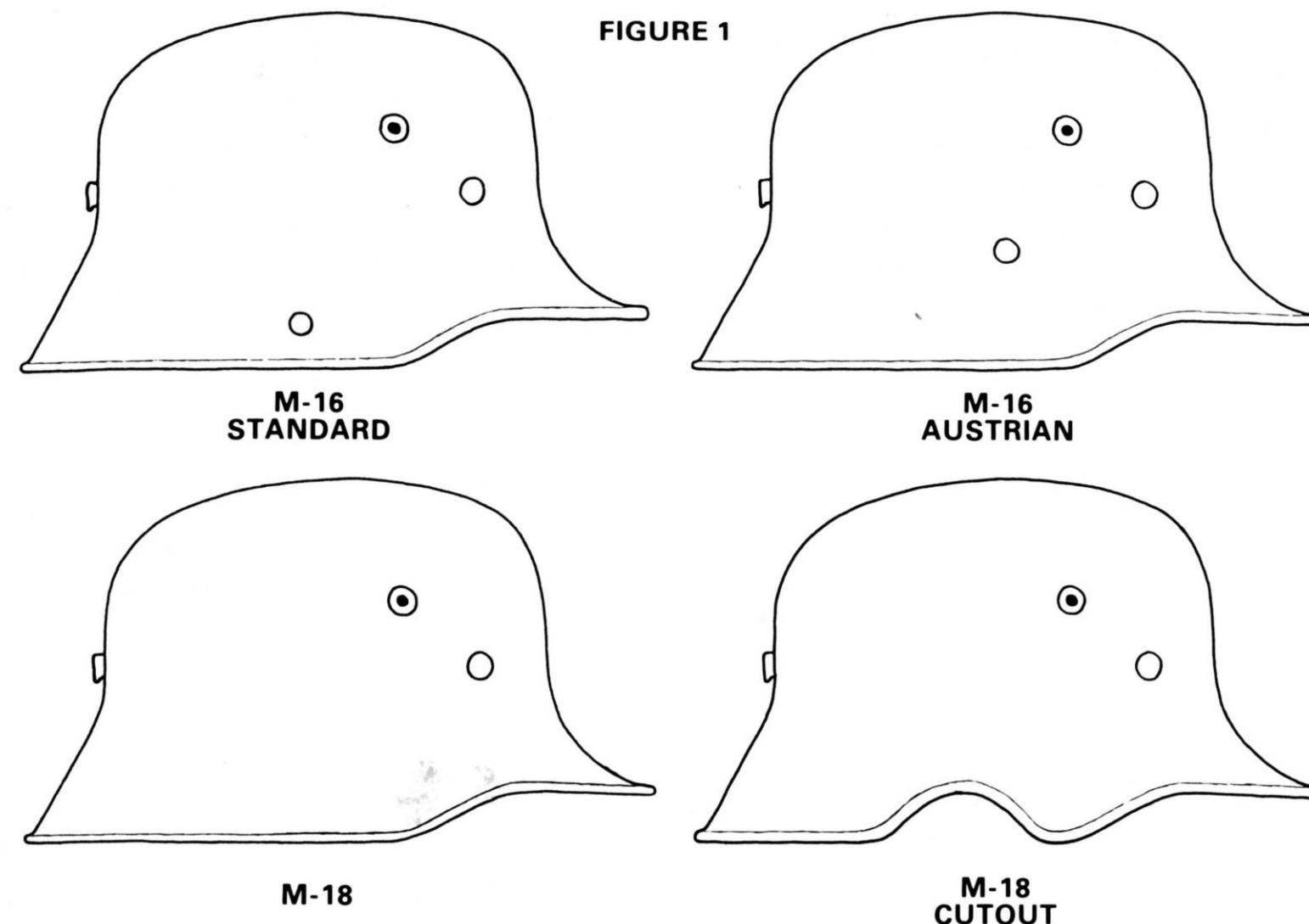


NOTE: These terms will be used extensively throughout this text.

### THE SHELL

The most basic part of the German helmet is the shell. The shell is the rigid outer structure of the helmet that protects the head, and is usually made of steel or some other hard material. During the period 1933-1945, several shell variations were used in German combat helmets. At the very beginning of this period, when the German military was beginning to rebuild, the WWI styles were reissued for use by the new Wehrmacht. These so-called “transitional” helmets generally utilized one of the four existing designs illustrated in Figure 1.

FIGURE 1



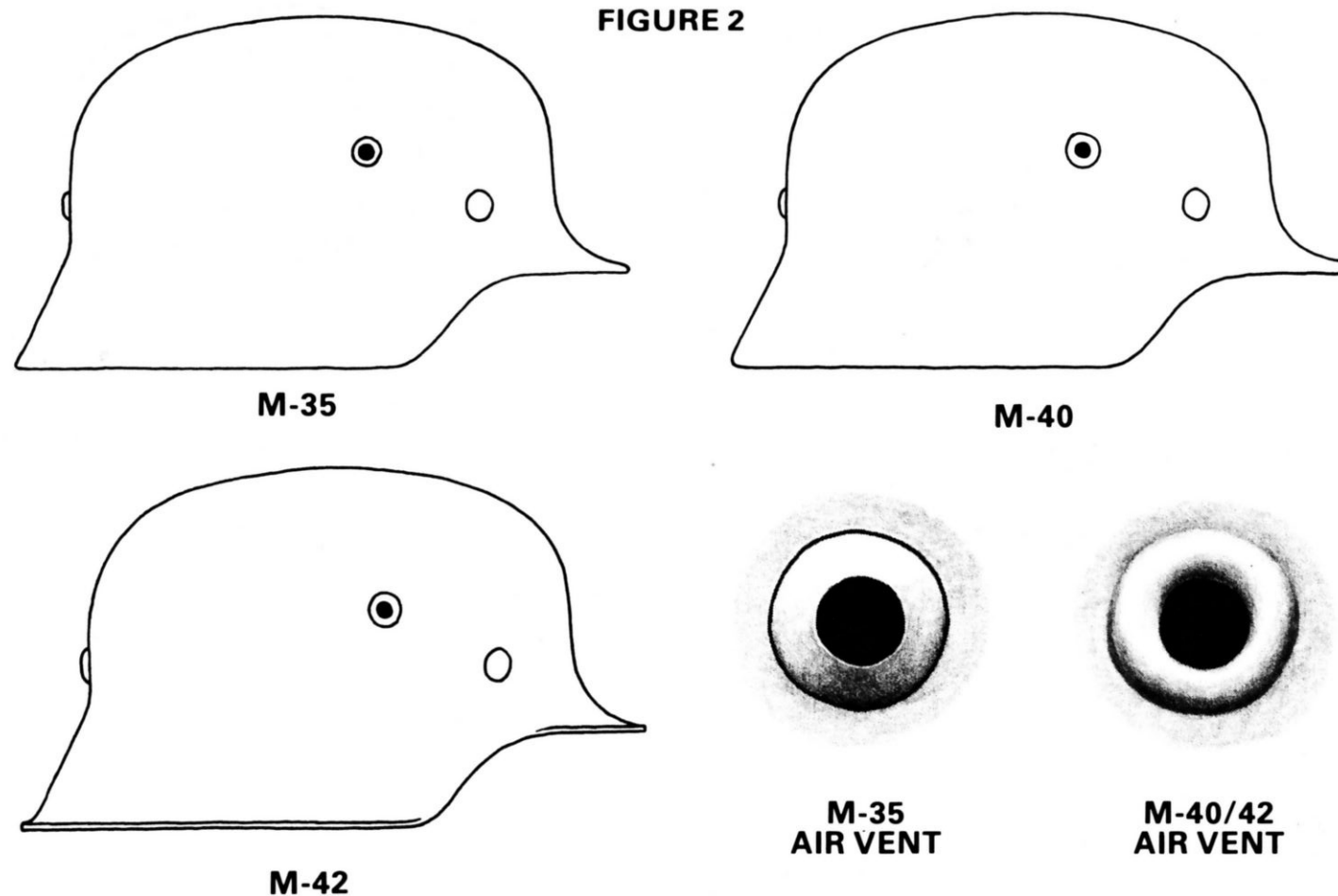
The model 1916 (designated M16) is easily distinguished from the model 1918 (M18) by the presence of an extra rivet on each side of the neckguard. This rivet secures a post or lug to the inner side of the neckguard; the chinstrap is attached to these posts. The M18 style eliminated the riveted post by securing the chinstrap to a “D” shaped ring attached to the liner band. (NOTE: A new liner and chinstrap system was designed in 1931 and used on most of these transitional helmets. This is covered in a later section.) The Austrian shell is very similar to the M16 German, the distinctive difference being in the location of the rivet on the outer neckguard. This rivet holds in place a “D” ring on the inner side of the neckguard, used for attaching the chinstrap. On the Austrian helmet, the rivet is located higher on the neckguard, closer to the vent. All of these styles were used extensively and successfully during the First World War.

In 1935, a new design was introduced. It was lighter, smaller, and better suited to a mobile army than the WWI style trench helmets. This basic model 1935 (designated M35) was modified in 1940 (M40), and again in late 1942 (M42). See Figure 2 for illustrations of the new designs.

These three designs can be distinguished from each other by their vents and rims. The M35 helmet has a grommet vent, which is a separate piece added to the shell. The bottom rim of the helmet is turned or “rolled” under, to provide a smooth edge. In 1940, the



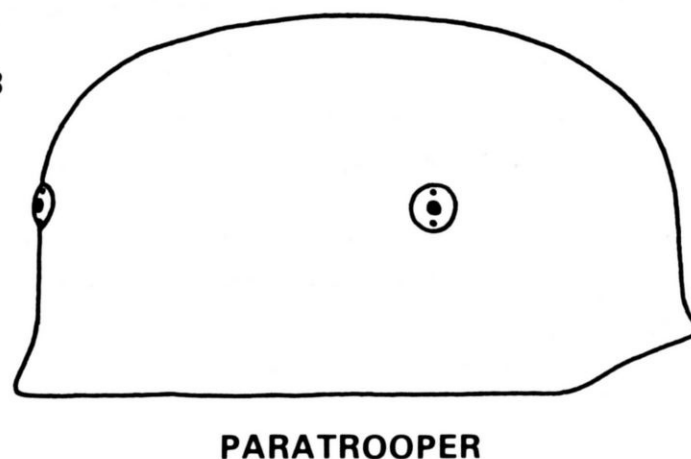
FIGURE 2



shell was modified and the grommet vent was replaced with a vent stamped, or pressed, into the metal itself. The rolled edge was retained. In 1942, a further modification flared the bottom edge outward, leaving an unrolled edge. The vent was not changed. Each modification was made in the interest of economy and efficiency in production, as each change allowed the shell to be made faster, cheaper, and with fewer steps.

There is at least one more type of helmet which can rightfully be called a combat style, along with all those previously mentioned. It is distinctive in its own right, and varies noticeably from the well known German shape. This of course is the paratrooper helmet. See Figure 3.

FIGURE 3

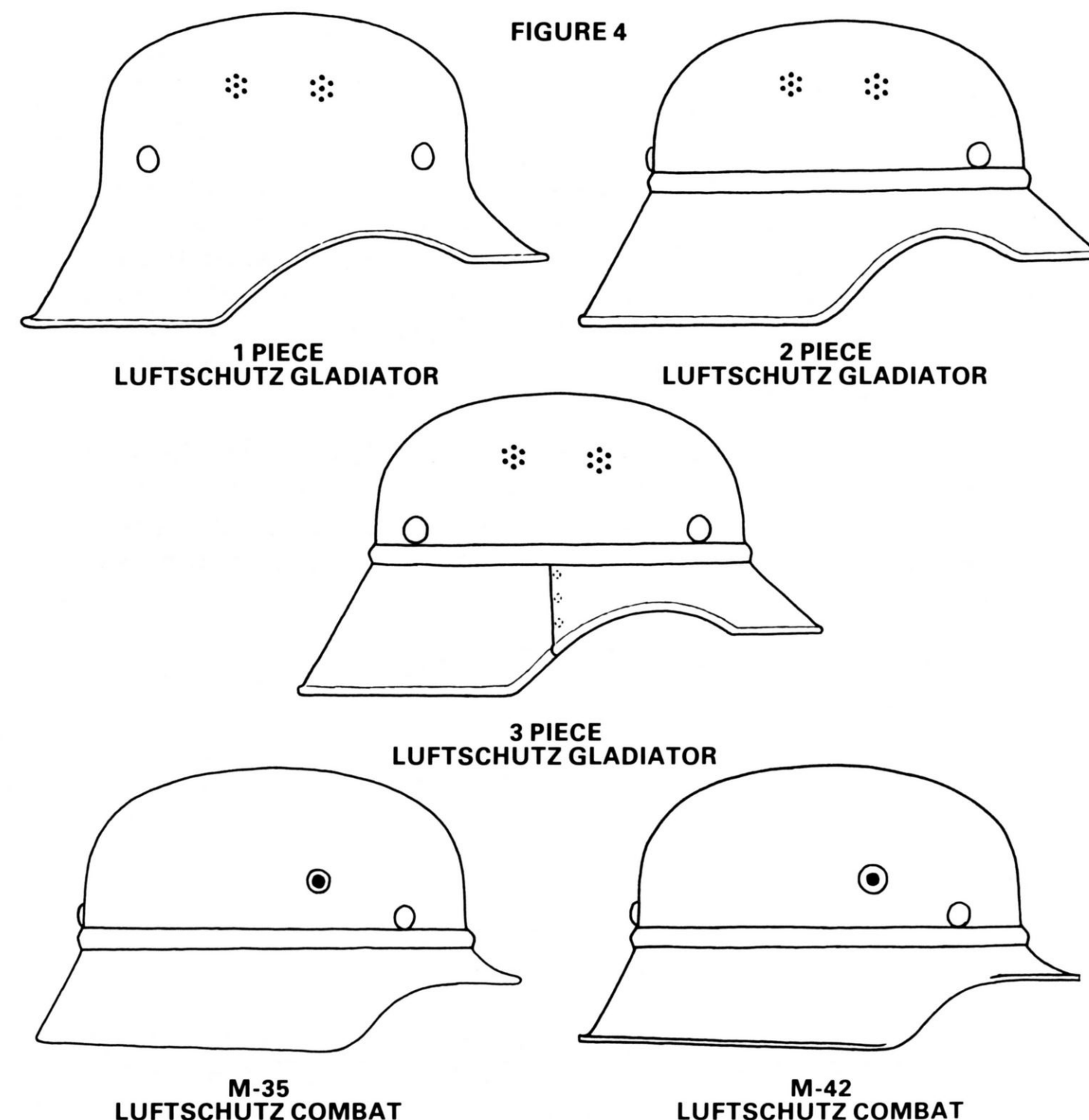


The paratrooper helmet is obviously shorter and more compact than the standard combat styles described so far. There are also differences in the liner, straps, and mounting screws. These will be

covered in more detail in later sections. Although the M35 rolled edge style was utilized in the basic shape of the paratrooper helmet, it was redesigned for airborne use by drastically shortening the visor and neckguard, in order to lessen air resistance during jumps. The smaller overall size also helped reduce the incidence of head injury from the helmet itself, caused by jolts and bumps from landing while wearing the helmet.

During the Third Reich era, there were various political and non-military groups, each organized for a specific function or service. Since the members of these groups were not combat troops, there was no need for them to use combat helmets. However, a helmet was desirable in some instances, and special lightweight shells were designed. There are two basic styles of lightweight, non-combat helmets. For convenience, they will be called "Luftschutz" style and "Police" style.

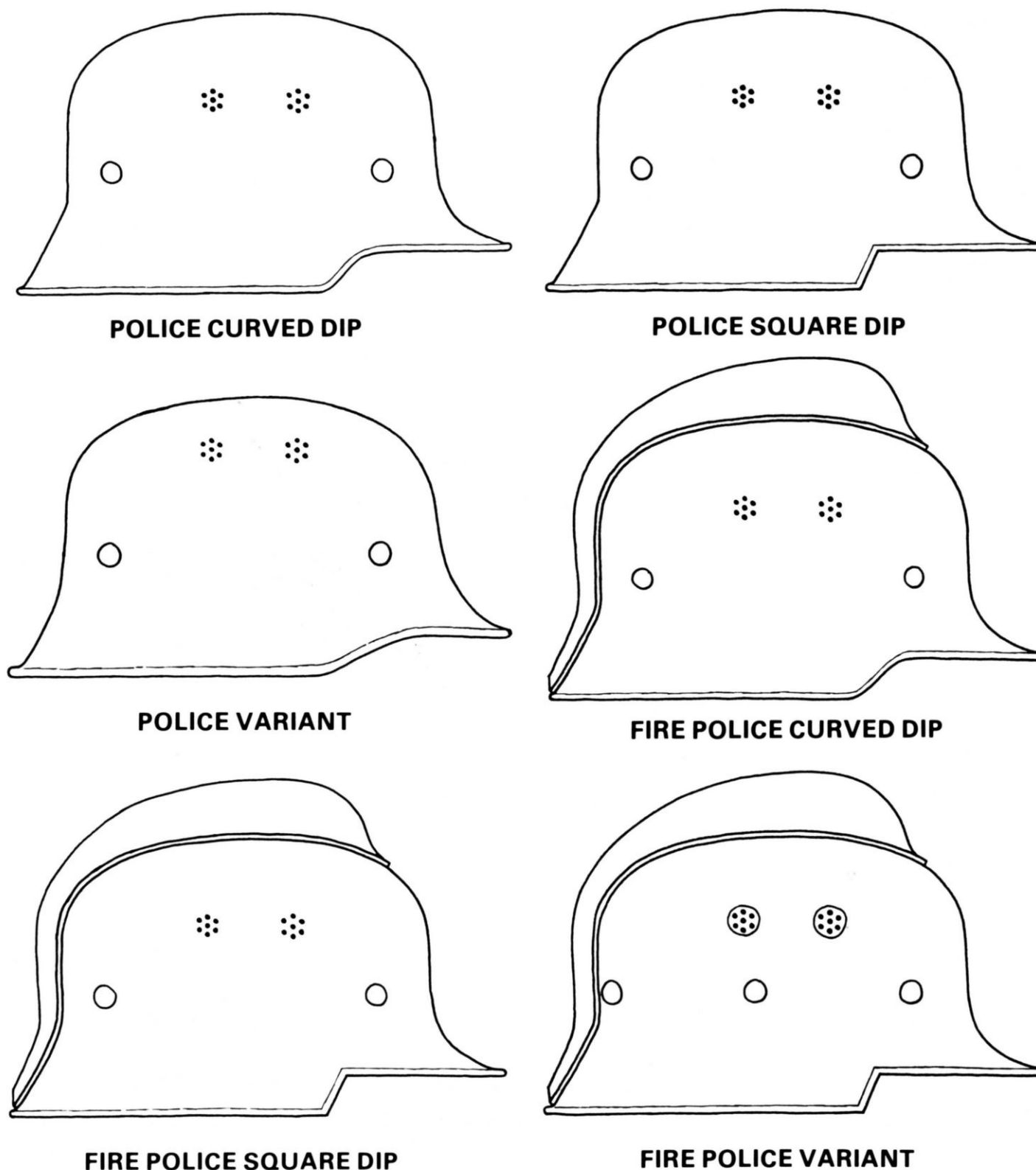
FIGURE 4





The Luftschutz style encompasses three variations. The first variation is made of one piece of metal, molded into the large "gladiator" shape characteristic of the Luftschutz style. This one piece model was used throughout the war. The second variation is called the two piece Luftschutz, because the helmet is actually constructed in two separate pieces. The dome section is affixed to the neckguard section, resulting in a round bead or ridge encircling the helmet at the seam. The third variation is known as the three piece Luftschutz. The neckguard is constructed in two separate pieces which are joined with a seam at each side, and then attached to the dome section in the same manner as the two piece style. See Figure 4.

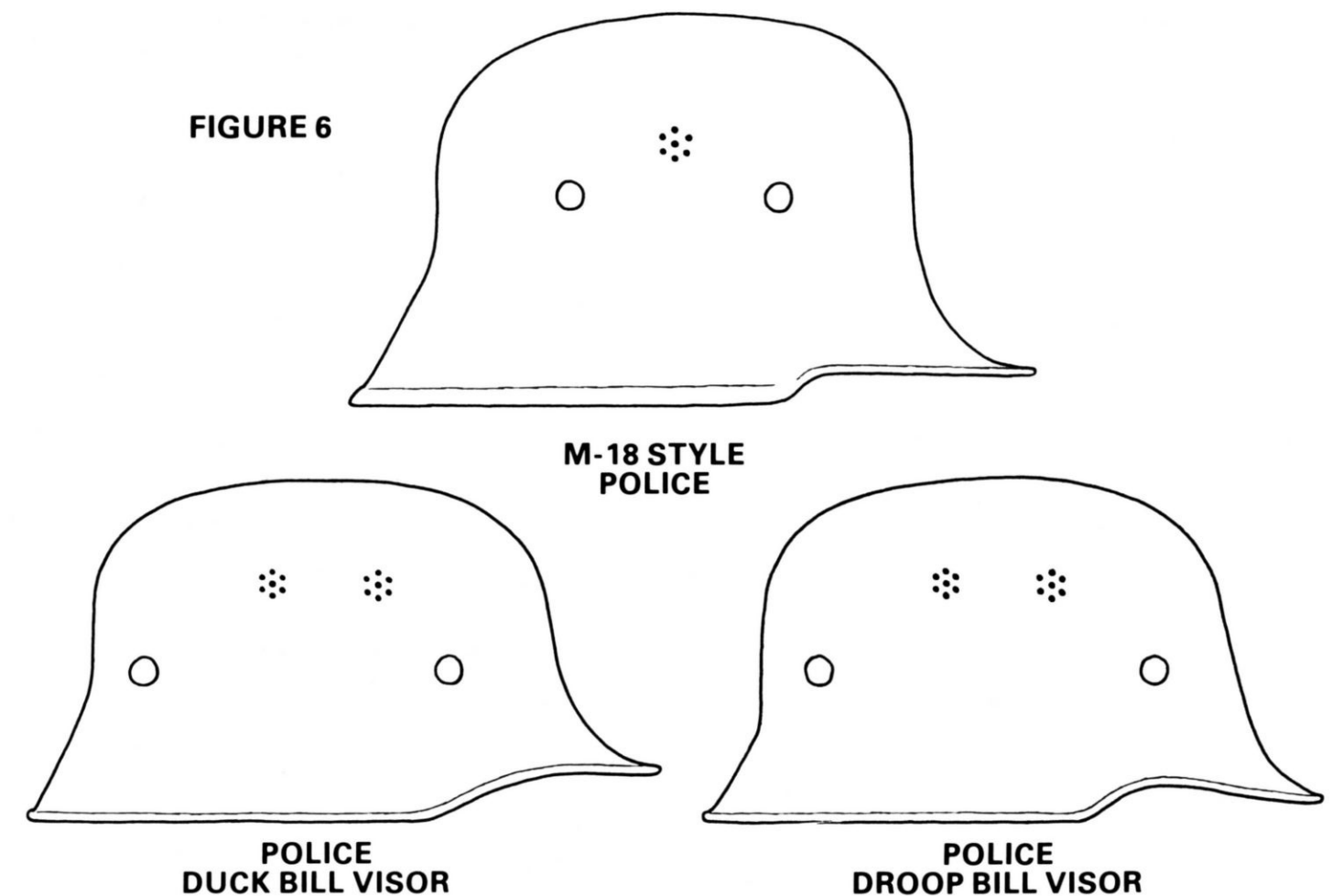
FIGURE 5



Note: Luftschutz personnel in combat areas used helmets similar to the M35, M40, and M42 combat helmets, rather than the standard lightweight Luftschutz styles described above. These are easily recognized by the existence of an extruded ridge around the circumference of the helmet. The fact that these helmets were used under combat conditions, where more protection was required, accounts for the variations from the usual Luftschutz models.

The other type of lightweight helmet is the Police style. It is similar in appearance to the M35 combat shell, with an inward rolled edge, but weighs less and has different air vents. For example, some have seven small holes clustered in a circle, with one or two sets on each side; some have a single large vent on each side covered with fine mesh screen; some have single vent holes similar to the stamped vents on the M40 combat shell; and some early examples have double "salt shaker" vents, which actually resemble the top of an old fashioned salt shaker. In addition to the diversity in air vents on the Police helmet, there are other frequently encountered differences in the shape of the shell itself—ie, the square dip visor, the duck bill visor, and the droop bill visor. As a further modification, firemen used all of the basic Police styles described so far, but usually with the addition of a chrome or aluminum comb. See Figures 5 and 6.

FIGURE 6



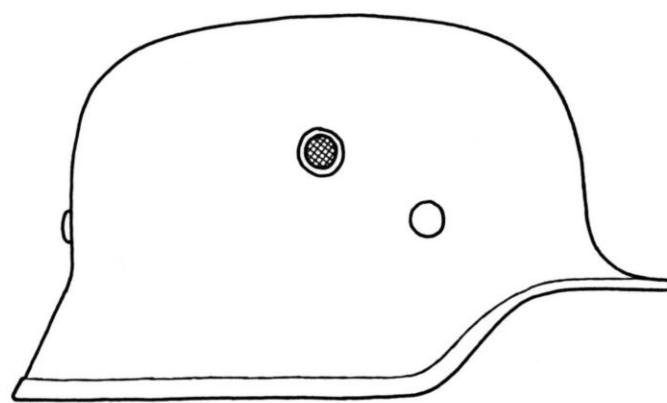
Some early Police helmets were made in the shape of the WWI or transitional shell, rather than the styles described above. Some of these early helmets were not really lightweight; they actually



equaled the WWI combat helmets in weight. However, the Police style seven hole vents were generally used on these models.

There are at least two more styles of German non-combat helmets that should be mentioned. One is known as the officer's parade helmet. These were made of aluminum or fiberglass and look like the M35 combat helmet. However, as the name suggests, they were not intended for combat, nor did they provide any real protection. They were generally worn by officers at parades and ceremonial activities only. See Figure 7.

FIGURE 7



FIBER PARADE

The other type of lightweight helmet is the pith helmet. These helmets differ noticeably from the standard German style. They have wide brims, to shade the sun, very light weight leather suspension liners, and a large dome shaped vent on the outside of the crown. The cork shell is usually covered with felt or canvas, and is found in several colors, such as green, tan, white, and khaki. They were used by the different branches of service in tropical areas, mainly for protection from sun and sand.

## PAINT

The next area of study is the paint. The early combat helmets were usually sprayed with smooth, semi-gloss paint, in gray for the Luftwaffe, and shades of green for the army (Heer), navy (Kriegsmarine), SS, and Police combat units. This type of paint was applied to the early transitional styles, as well as the M35. These colors are identified as "army green" and "Luftwaffe gray", for ease of reference. As the war progressed and the M35 shell style gave way to the M40 style, there was a slight modification in the color and texture of the paint as well. The semi-gloss, smooth paint was almost entirely replaced by a thick, rough, textured paint, several shades darker. This was intended to be more glare resistant and unobtrusive.

Luftwaffe gray and army green were standard colors for combat helmets, but there are several different colors used for non-combat pieces. Most lightweight Police helmets were painted in a gloss

black paint, as were Allgemeine SS helmets. Luftschutz helmets were generally dark blue, almost black. Red Cross helmets were gray or white. SA helmets and Feldherrnhalle helmets were usually brown.

These are not hard and fast rules, and many exceptions to the above "standard issue" colors are found. One notable exception is the Luftwaffe paratrooper helmet, which is not Luftwaffe gray as expected, but closer to army green in color. Another common exception involves an M35 or transitional helmet which had been issued originally in smooth paint, then reconditioned, repainted, and reissued in a rough paint, possibly even to a different branch of service, or to a non-military organization. Some Allgemeine SS helmets were repainted green and reissued to the Waffen SS. Many helmets simply outlived their owners, and with the subsequent shortages of material as the war progressed, it was common practice to reissue early style helmets.

As a final comment about paint, it should come as no surprise that helmets were frequently painted or covered with wire or cloth covers by their owners, for camouflage. Helmets were generally not factory issued with camouflage paint — it was usually left up to the individual owner to camouflage it as he saw fit. Some patterns are easily recognizable, such as the tan colored camos for use in Africa or tropical areas, and the white painted camos for use in snow. The obvious reason for camouflaging the helmet was to make the soldier as inconspicuous as possible, so any number of designs and patterns are encountered. As a matter of fact, there are probably no two camo helmets exactly alike! It depended entirely upon the artistic ability, and the service location, of the soldier.

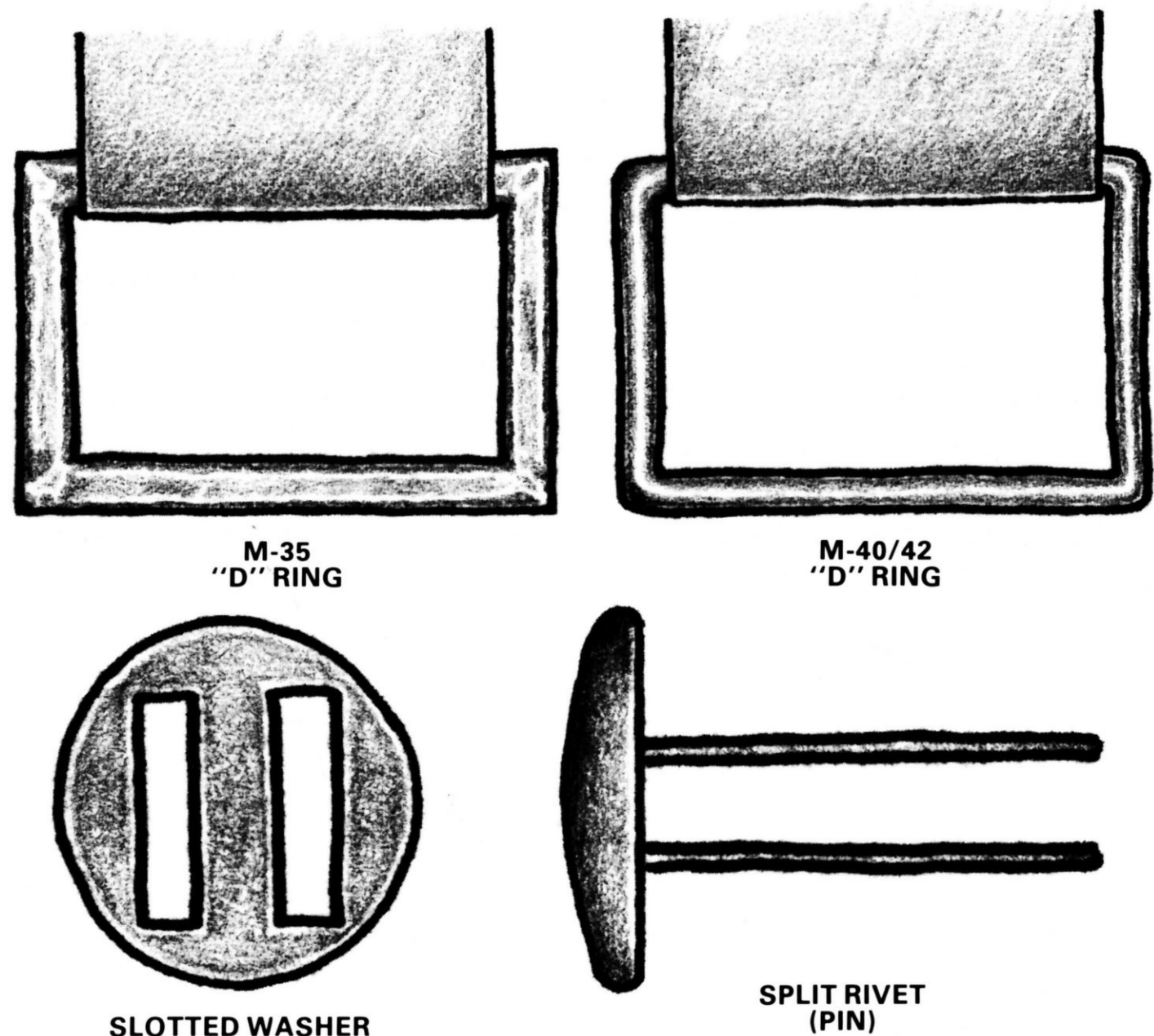
## THE LINER

The next basic component of the helmet is the liner. This term refers to the suspension system inside the shell, designed to snugly fit the helmet to the head of the wearer. Some of the earliest of the Third Reich era combat helmets retained the three pad leather WWI style liner, mounted on a leather or steel band. However, in 1931 a new lighter weight, more easily adjustable and shock absorbent liner was introduced (designated M31). It is made of a single piece of leather, trimmed to form eight contiguous flaps, and riveted to a circular metal band. This assembly is secured to a slightly larger outer metal band by means of spring steel strips; a drawstring in the top brings the flaps together and allows for size adjustments. The early outer bands are aluminum, while the later bands (about 1940 on) are steel. A "D" shaped ring, used for attaching the chinstrap, is riveted midway along each side of the outer metal band. The early liners with aluminum bands have "D" rings with square pointed corners, while "D" rings with rounded corners are found on the



later steel bands. The shell and liner sizes are stamped into the outer metal band on the left side (as the helmet is worn), while the manufacturer's name and year of manufacture are stamped into the right side (both marks located just to the rear of the "D" rings). The liner size is also ink stamped on the leather of a rear flap (small numbers, usually in a circle). The liner is held in the shell by split rivets, which go through the shell, then the outer liner band, then a slotted washer, and are then spread open. There are three rivets on combat helmets. In spite of diminishing quality, the standard M31 liner was used in combat helmets through the end of the war. See Figure 8.

FIGURE 8



Note: Many German helmets were salvaged for use by Norwegian troops after the end of WW II. They were repainted and refitted with new leather for the otherwise original liner. The Norwegian replacement liners are dark reddish brown, instead of the cream colored German leather, which darkens to tan or brown as it ages. Also, the liner size is ink stamped in large numbers inside a circle on the Norwegian liners, unlike the small stamp on the original German leather. Finally, the German leather was riveted to the inner metal

band by flat headed aluminum rivets; the Norwegian replacements used brass domed rivets. With this knowledge, a Norwegian replacement liner should be easy to recognize.

Non-combat helmet liners differ from the M31 style in that the leather is mounted on cardboard or fiber bands, with a cork spacer between the liner band and the shell. These liners have anywhere from three to ten leather flaps instead of eight as in the combat style. Some late war liners are made of cloth or canvas, rather than leather. A thick headrest pad is attached to the liner inside the crown on some non-combat helmets. Non-combat helmet liners are usually secured with four rivets, although examples exist with both three rivets and six rivets. See Figures 9 and 10.

There is one notable exception to the standard type liners described above. The paratrooper helmet has a special, heavy duty liner with extra padding, designed specifically to be more shock absorbent. It has thick foam padding underneath the leather headpiece, which is non-adjustable. Twelve large air holes are interspaced over the entire leather surface of the liner. The liner is fastened in the shell with four special metric thread nuts and bolts. The early bolts were steel, with a vent hole through the center. Some mid-war bolts were aluminum with a slotted head and a center vent hole, while later bolts were aluminum with a slotted head and no vent hole.

M35, M40, and M42 combat helmets were issued in standard shell sizes (usually stamped into the metal of the inner neckguard on the left side or the rear), each of which could accomodate two different liner sizes, as follows:

SHELL SIZE	LINER SIZE
60	52 - 53
62	54 - 55
64	56 - 57
66	58 - 59
68	60 - 61

CHINSTRAPS

Combat helmets employ a belt and buckle type of adjustable leather chinstrap. The straps are looped through a "D" ring on each side of the liner band and fastened with a removable rivet. The long strap should hang from the right side of the helmet as it is worn, the buckle half from the left. The straps are generally black or brown, with one smooth finished side and one rough side.

Paratrooper helmets use a "harness" system of four straps, with a sliding buckle that does not completely release. One strap is attached to each of the four bolts, one on each side and two in the back. They are softer and wider than the standard leather combat



FIGURE 9

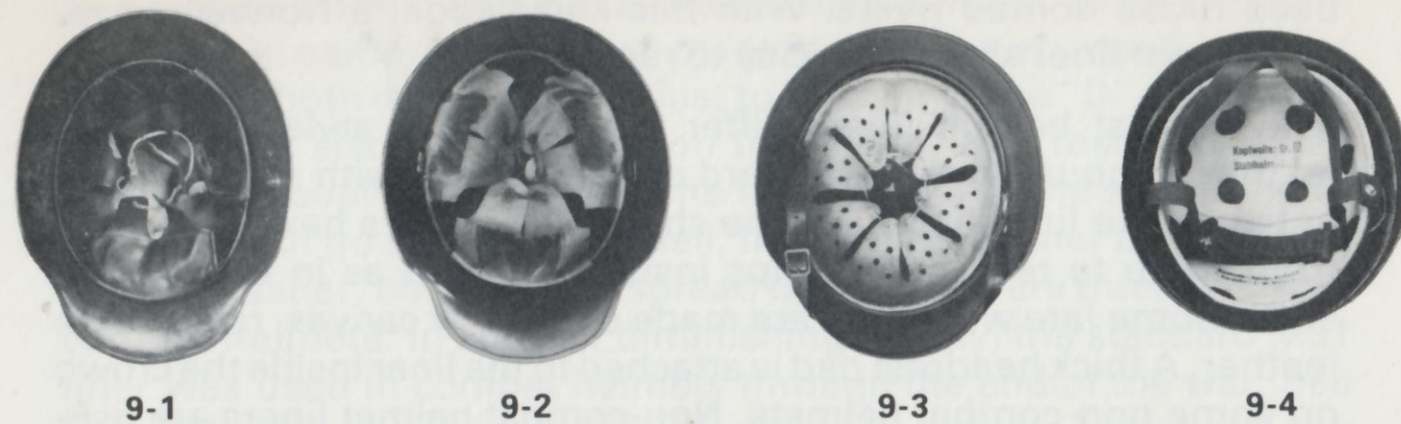


FIGURE 10

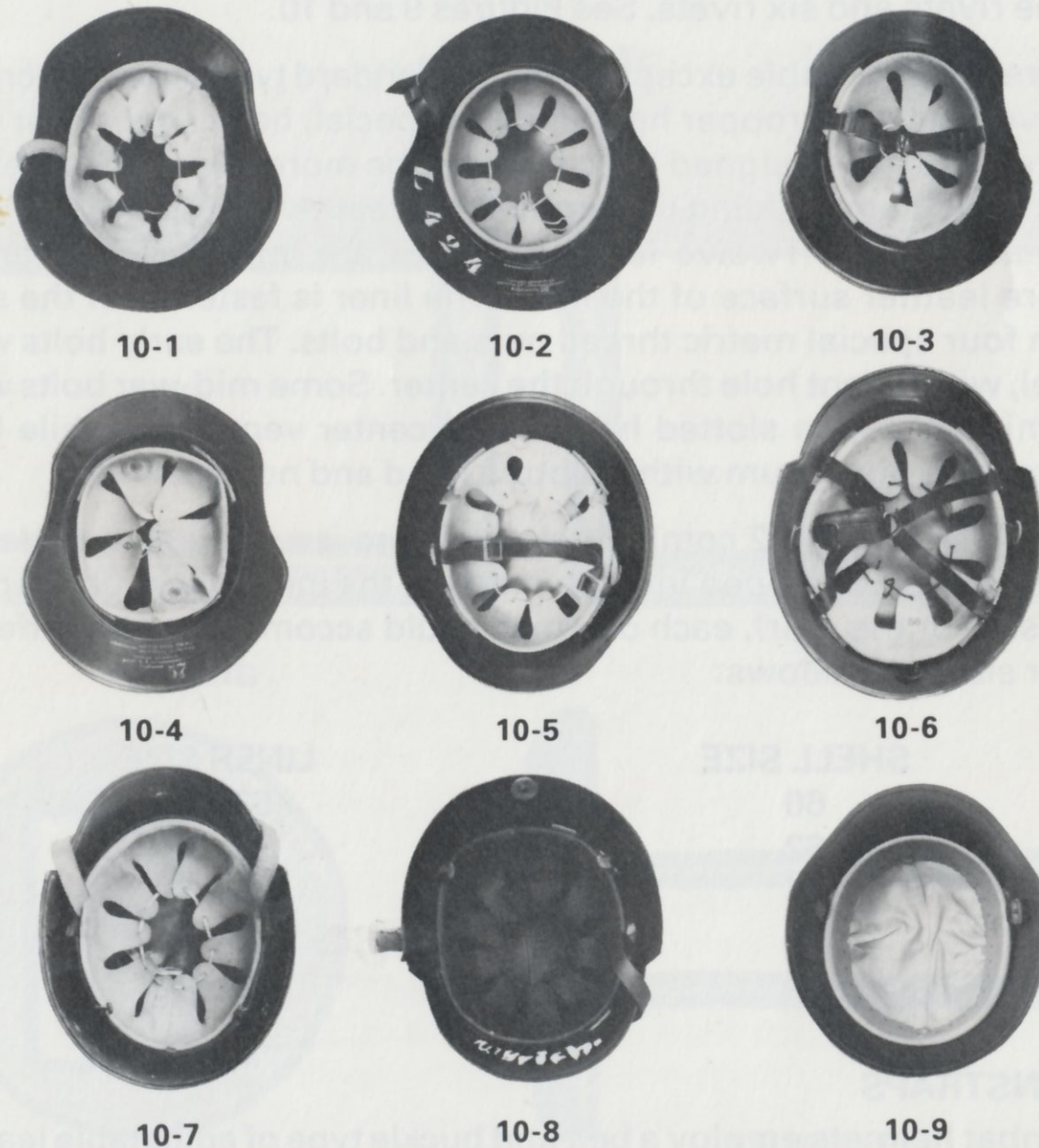


FIG. 9-1: WWI German manufacture. FIG. 9-2: WWI Austrian manufacture. FIG. 9-3: M-31. FIG. 9-4: Paratrooper. FIG. 10-1: 1 piece Luftschutz gladiator style. FIG. 10-2: 2 piece Luftschutz gladiator style. FIG. 10-3: 3 piece Luftschutz gladiator style. FIG. 10-4: Luftschutz variation liner. FIG. 10-5: Police with top pad. FIG. 10-6: Police with Y strap. FIG. 10-7: Police variation liner with top pad. FIG. 10-8: Fireman with pebble grain leather and top pad. FIG. 10-9: Fiberglass helmet leather liner with retractable chin-straps.

strap, and each side strap is sewn in a criss-cross with the back strap.

Police style straps are similar to the combat straps, although somewhat lighter and with a cheaper buckle. They are generally sewn or riveted to the cardboard/fiber liner band. There is also a frequently encountered variation on some Police helmets—the so called “Y” strap. It consists of a “Y” shaped strap attached in two places on each side of the liner band, then the two straps on each side are joined to form one strap, with a buckle on the left and the tongue on the right. Occasionally, plastic straps were used on very late war non-combat helmets.

## INSIGNIA

The final section of this chapter on identification and classification of German helmets concerns the insignia and markings used on the helmets. Each organization that used helmets had its own distinctive insignia. This was true of all military, political, and civil organizations in general, and these insignia can therefore be found on all the different styles and models of helmets described thus far.

Decals were used on combat helmets to depict the insignia of the different branches of service. Decals are designs or images made to be transferred from specially treated paper to a hard surface. They are attached by means of water soluble adhesive, which permits them to adhere securely to the painted shell, whether smooth paint or textured paint was used. The decal or transfer, as it is sometimes called, actually conforms itself to the surface to which it is applied, and is generally impervious to water and other elements of nature, once it is situated. Some decals were made for application face up, after being soaked and slid off the paper backing. Others were applied face down, with the tissue stripped from the surface after soaking and positioning. The insignia is centered directly beneath the vent(s) on the side(s) of the helmet. Until approximately 1940, combat helmets were issued with double insignia, which included the branch of service on the wearer's left side, and the national tri-color shield on the right. (The exception to this was the SS helmet, which utilized the sigrunen on the right, and the party shield on the left.) By early 1940, it became apparent to combat troops that they should scrape off the national color/party shields, as they were too bright and conspicuous, making the wearer a better target. Not everyone felt it necessary to do this however, and it is common to see transitional and M35 combat helmets which survived with the double insignia intact. However, new helmets were issued without the party/national shield from 1940 on; virtually all M40 and M42 helmets have single insignia, or none at all. An exception is the helmet worn by combat troops of the Police, which continued to have double decals until late in the war. Many of the late war



helmets (1944 and 1945) were issued with no insignia at all, as material and time were both running out. Also, it was common for soldiers to completely paint over decals in their attempts to camouflage their helmets, although some of the more "artistic" camouflage jobs carefully painted around the insignia, leaving it exposed. Additionally, some groups such as the NSKK and RAD, who were not regularly issued helmets as original equipment, sometimes utilized existing stocks of Heer or Luftwaffe helmets and reissued them among their own ranks with their own insignia and paint covering the original insignia and paint.

Non-combat helmets were also usually adorned with double decal insignia, each unique in design to its particular organization. In most cases, these decals come in pairs; the decal on the wearer's right is usually the party shield, and the left decal portrays the organizational insignia. Following this section you will find, in visual form and actual size, the insignia used on the various military, political, and non-military helmets known to have been used by organizations and groups in the Third Reich era.

The original purpose of the insignia on a helmet was to identify the wearer of the helmet. Today, although the former owner of the helmet may be gone and long forgotten, the insignia tells the story of the helmet and its use during the Third Reich. In a sense, one German helmet is basically the same as the next, since the shell, the paint, and the liner are pretty much standard from one model and style to the next. It is the insignia which really differentiates one helmet from another, and makes one helmet rare and another common. Unfortunately, the insignia is probably one of the easiest components of the helmet to reproduce, which accounts for the abundance of reproduction insignia available. Many of these copies are poor in quality and easily recognizable because they are too big or too little, lacking in detail, or not the proper shade or color. Others, notably SS insignia, are easily duplicated, making it difficult to distinguish an original from a copy, and even the experienced collector gets fooled sometimes.

The whole purpose of this chapter has been to give you an idea of what to look for, and a feel for what something "should" look like. As we have mentioned previously, it is impossible to give any hard and fast rules on how to distinguish an authentic helmet from a phony. But maybe now that you know, for example, that a double decal army helmet should be on an M35 shell and have smooth paint, you will think twice before buying that M40 double decal army helmet with rough paint you see on a table at your next gun show.



**HEER EAGLE**  
Silver on Black



**EARLY LUFTWAFFE EAGLE**  
White and Black



**LATE LUFTWAFFE EAGLE**  
White and Black



**EARLY STYLE SS RUNES**  
Black on Silver



**LATE STYLE SS RUNES**  
Black on Silver



**KRIEGSMARINE EAGLE**  
Gold on Black

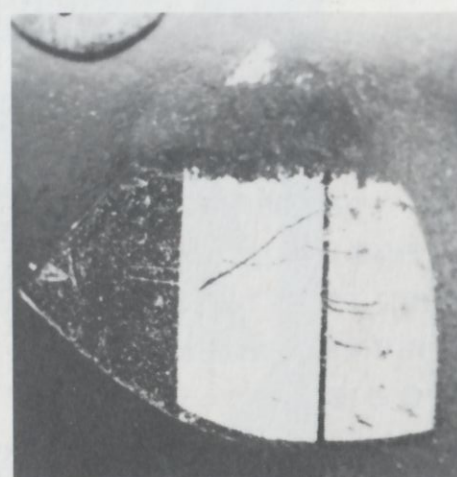




**BORDERLESS  
POLICE EAGLE**  
Silver on Black



**BORDERED POLICE  
EAGLE**  
Silver on Black



**SMALL EARLY POLICE  
TRI-COLOR SHIELD**  
Black—White—Red



**SMALL EARLY  
CIVIL POLICE**  
White and Black



**LARGE EARLY  
CIVIL POLICE**  
White and Black



**RLB INSIGNIA**  
Blue—Silver—Black



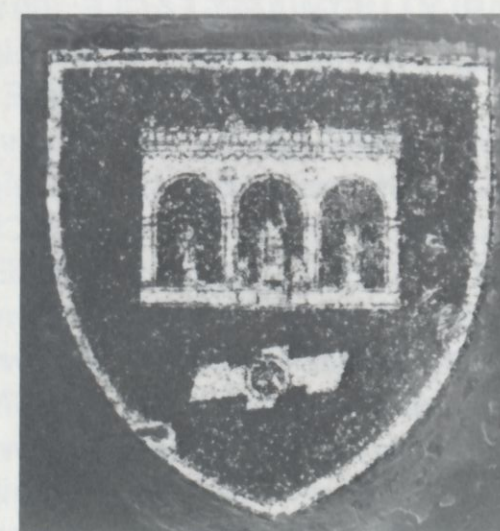
**LUFTSCHUTZ INSIGNIA**  
Silver and Black



**DRK INSIGNIA**  
Black—Red—White



**RAD INSIGNIA**  
Silver on Black

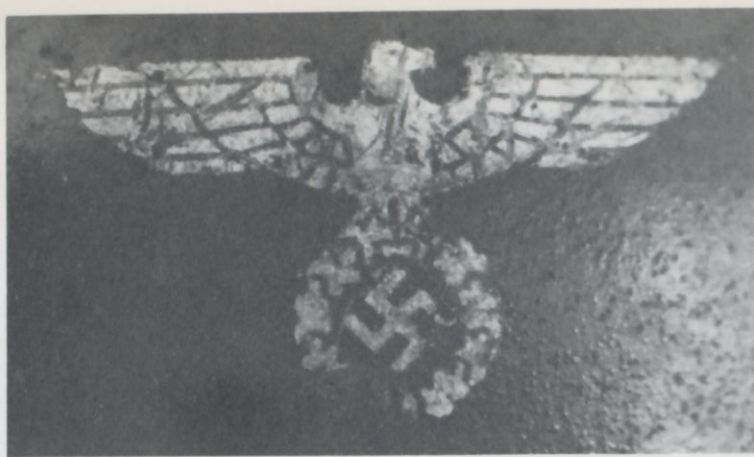


**FELDHERRNHALLE INSIGNIA**  
Silver—Red—Black



**SA INSIGNIA**  
Maroon and Silver





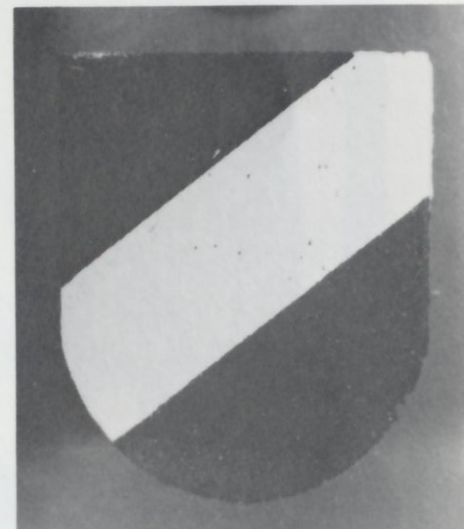
**SA EAGLE**  
Maroon and Silver



**PARTY SHIELD**  
Black—White—Red



**NSKK EAGLE**  
Silver and Black



**NATIONAL TRI-COLOR SHIELD**  
Black-White-Red

**HEER EAGLE:** (33 mm wide, 41 mm high). **EARLY LUFTWAFFE EAGLE:** (60 mm wide, 36 mm high). **LATE LUFTWAFFE EAGLE:** (67 mm wide, 36 mm high). **EARLY STYLE SS RUNES:** (33 mm wide, 41 mm high). **LATE STYLE SS RUNES:** (33 mm wide, 41 mm high). **KRIEGSMARINE EAGLE:** (33 mm wide, 41 mm high). **BORDERLESS POLICE EAGLE:** (34 mm wide, 42 mm high). **BORDERED POLICE EAGLE:** (34 mm wide, 42 mm high). **SMALL EARLY CIVIL POLICE:** (25 mm × 25 mm). **SMALL EARLY POLICE TRI-COLOR SHIELD:** (30 mm wide, 35 mm high). **LARGE EARLY CIVIL POLICE:** (35 mm × 35 mm). **RLB INSIGNIA:** (63 mm × 63 mm). **LUFTSCHUTZ INSIGNIA:** (132 mm wide, 38 mm high). **DRK INSIGNIA:** (34 mm wide, 48 mm high). **RAD INSIGNIA:** (48 mm wide, 44 mm high). **FELDHERRNHALLE INSIGNIA:** (40 mm wide, 41 mm high). **SA INSIGNIA:** (34 mm). **SA EAGLE:** (60 mm wide, 34 mm high). **NSKK EAGLE:** (60 mm wide, 30 mm high). **PARTY SHIELD:** (33 mm wide, 41 mm high). **NATIONAL TRI-COLOR SHIELD:** (33 mm wide, 40 mm high).

## CONDITION AND GRADING GUIDE

It has become obvious over the years that there is a void in the area of grading German helmets. It would be presumptuous to think that this void could be abruptly eliminated with the emergence of a book such as this. However, any endeavor has to have a beginning, and perhaps the grading guide described here may serve as a basis for a standard system of grading German helmets. Some form of standardization is absolutely essential, particularly for those who deal by mail or by phone. A standard grading system is a cornerstone of any pricing system, since a helmet is generally worth more the higher it is graded.

The following standards are proposed as a basis to describe the various grades of German helmets. Dealers and collectors must use their own good judgment and common sense in order to make the system work. Anyone using these guidelines will have to make decisions as to whether or not a helmet meets certain standards, and should try to avoid the tendency to overgrade.

There are six principal categories in this grading system of German helmets, these being MINT, EXCELLENT, VERY GOOD, GOOD, FAIR, and POOR. These grading categories are intended to describe the overall condition of the entire helmet, but can be easily used to describe various components as well. Some helmets will naturally fall between categories, and for this, more definitive terms can be added, eg. VERY GOOD PLUS, LOW EXCELLENT, NEAR MINT, etc. The percentages are used to provide more precise descriptions, in spite of the fact that percentages themselves are somewhat judgmental in nature.

- I. **MINT:** 96 - 100% of the paint and decal(s) are present. The liner, chinstrap, and rivets are all present and show no noticeable wear. Very little, if any, scratching, chipping, or wear overall.
- II. **EXCELLENT:** 90 - 95% of the paint and decal(s) are present. The liner, chinstrap, and rivets are all present and show little use. Overall well preserved, with light wear.
- III. **VERY GOOD:** 75 - 89% of paint and decal(s) are present. The liner, chinstrap, and rivets show enough wear to indicate the helmet was used.
- IV. **GOOD:** 60 - 74% of the paint and decal(s) are present. The liner, chinstrap, and rivets show normal wear. Overall appearance shows regular use.



- V. FAIR: 45 - 59% of the paint and decal(s) are present. The liner, chinstrap, and rivets show considerable wear and hard use. Overall condition is well used.
- VI. POOR: Less than 45% paint and decal(s). Some components may be missing, damaged, or badly worn. Shell may have dents, cracks, or bullet holes. Overall, almost worn out.

With few exceptions, the various components of a helmet should match each other in condition, within a range of plus or minus one grade difference. If this is not the case, then you should check to see if one or more component has been replaced. For example, an EXCELLENT liner in a FAIR shell is a clue that the liner may not be original to that particular helmet.

## PRICING

Generally speaking, an object is worth whatever at least one person is willing to pay for it. While this is basically true, prices tend to show some degree of stability, subject to condition, rarity, and the law of supply and demand. This chapter is an attempt to deal with the very subjective matter of pricing. We have endeavored to provide realistic and up-to-date prices for a wide variety of German helmets. The figures shown are not arbitrary amounts selected by the authors. They represent extensive research from such sources as other collectors, dealer retail sales lists, Gun and Military Show prices, and military auctions. A range of prices is shown covering the most commonly encountered grades, from GOOD through EXCELLENT. By interpolation, prices can then be figured for lesser/superior grades. Only a single price is shown for one-of-a-kind or extremely rare pieces, since they are hard to obtain in any condition and truly are worth whatever the buyer is willing to pay.

It should be noted that the suggested prices are average retail, or dealer prices. Keep in mind that these prices will probably not be realized by a collector selling to a dealer. On the other hand, a collector should not expect to have to pay the prices shown when buying a helmet from a veteran. In the past few years, prices have shown a tendency to rise at a steady rate for almost all types of German helmets. If you, as a collector, have been searching for a particular helmet for some time, and then find an example that is overpriced, you will have to make a difficult decision. Should you buy it at inflated value and contribute to runaway pricing, or refuse to pay the price and pass it up, taking the chance that you will find one elsewhere at the right price? We can help you decide whether the helmet is original; we can help you assess its condition; we can help you determine its value. However, in the end, the decision to buy or not to buy is yours alone!





Wm. R. Maertz Collection

**DESCRIPTION:** Double Decal Heer on Austrian WWI shell, M31 style liner, smooth green paint, silver eagle on left side and tri-color shield on right.

**AVAILABILITY:** Scarce

**PRICE RANGE:** GOOD — \$125  
EXC — \$225



**DESCRIPTION:** M16 Double Decal Heer, M31 liner, smooth green paint, with early pink war games band (reversible to yellow), silver eagle on left side and tri-color shield on right.

**AVAILABILITY:** Scarce

**HELMET**

**PRICE RANGE:** GOOD — \$125  
EXCELLENT — \$250

**WAR GAMES BAND:** \$50 ADDITIONAL





Wm. R. Maertz Collection

**DESCRIPTION:** M16 Single Decal Heer, M31 liner, rough green paint, silver eagle on left side, "reissued" circa 1940.

**AVAILABILITY:** Scarce

**PRICE RANGE:** GOOD — \$90  
EXCELLENT — \$125



**DESCRIPTION:** M18 Single Decal Heer, M31 liner, rough gray/green paint, silver eagle on left side, "reissued" circa 1940.

**AVAILABILITY:** Scarce

**PRICE RANGE:** GOOD — \$90  
EXCELLENT — \$125





**DESCRIPTION:** Double Decal Heer ear cutout transitional, M31 liner dated 1931, smooth green handpainted finish, silver eagle on left side and tri-color shield on right.

**AVAILABILITY:** Rare

**PRICE RANGE:** GOOD — \$500  
EXCELLENT — \$750



*Wm. R. Maertz Collection*

**DESCRIPTION:** No decal Heer on Austrian shell, M31 liner, rough gray/green paint, with later style yellow war games band (reversible to red).

**AVAILABILITY:** Scarce

**HELMET**

**PRICE RANGE:** GOOD — \$65  
EXCELLENT — \$100

**WAR GAMES BAND:** \$50 ADDITIONAL





**DESCRIPTION:** M35 Double Decal Heer, M31 liner, smooth green paint, silver eagle on left side and tri-color shield on right.

**AVAILABILITY:** Scarce

**PRICE RANGE:** GOOD — \$100  
EXCELLENT — \$225



**DESCRIPTION:** M40 Single Decal Heer, M31 liner, rough green paint, silver eagle on left side.

**AVAILABILITY:** Common

**PRICE RANGE:** GOOD — \$60  
EXCELLENT — \$90

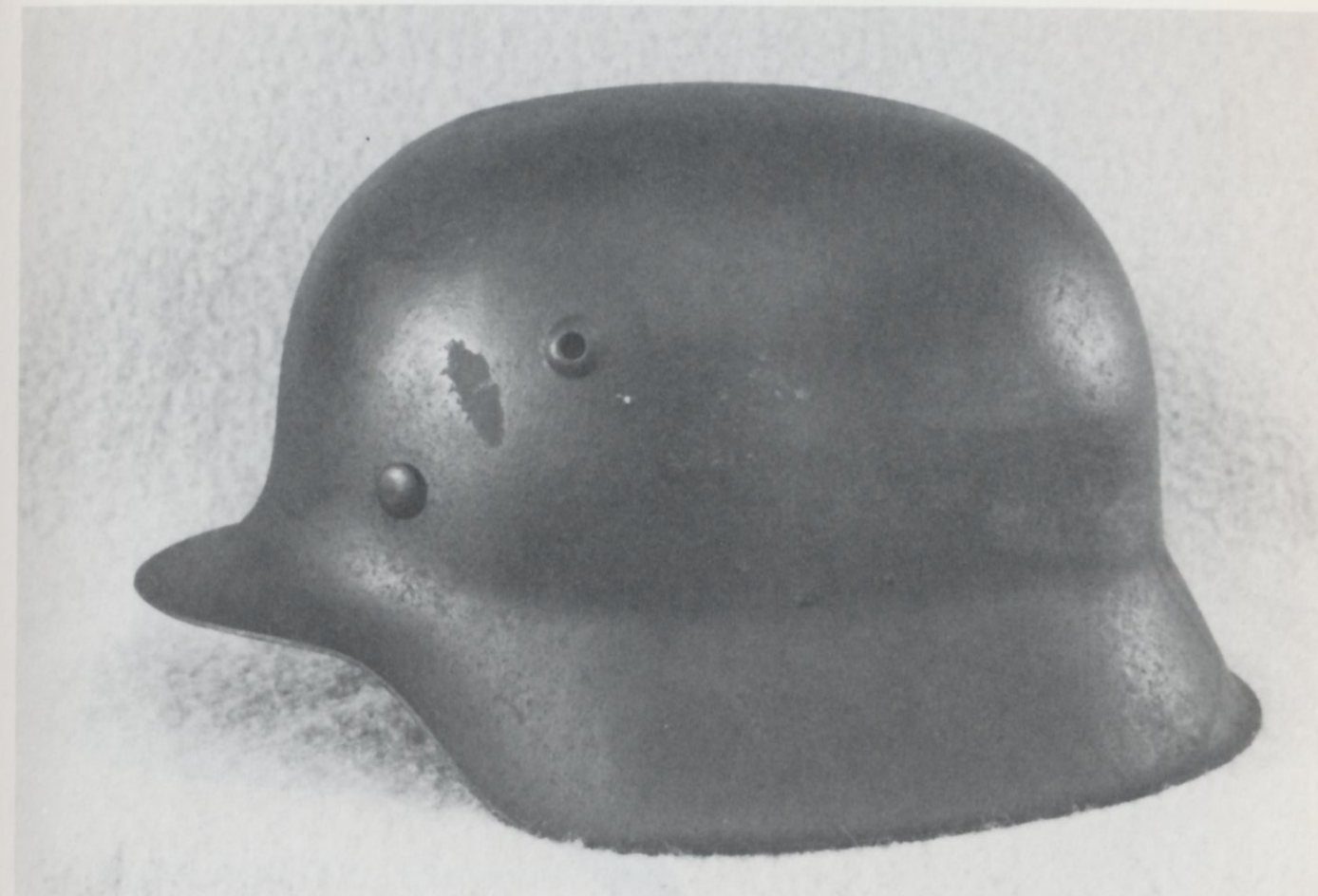




**DESCRIPTION:** M42 Single Decal Heer, M31 liner, rough green paint, silver eagle on left side.

**AVAILABILITY:** Common

**PRICE RANGE:** GOOD — \$55  
EXCELLENT — \$85



*Wm. R. Maertz Collection*

**DESCRIPTION:** M42 late war Heer with no decal, M31 liner, rough green paint.

**AVAILABILITY:** Common

**PRICE RANGE:** GOOD — \$45  
EXCELLENT — \$65





**DESCRIPTION:** M35 Heer, originally Double Decal, repainted with rough gray/green paint, tri-color shield on right side covered by paint, silver eagle on left side remains exposed.

**AVAILABILITY:** Scarce

**PRICE RANGE:** GOOD — \$75  
EXCELLENT — \$125



**DESCRIPTION:** Double Decal Heer Paratrooper, standard paratrooper liner, early style bolts, smooth green paint, silver eagle on left side and tri-color shield on right.

**AVAILABILITY:** Extremely Rare

**AVERAGE PRICE:** \$1000+







*Jim Bandy Collection*

**DESCRIPTION:** Double Decal Heer officer's aluminum parade helmet, smooth green paint, lightweight liner, silver eagle on left side and tri-color shield on right, four rivet construction.

**AVAILABILITY:** Rare

**PRICE RANGE:** GOOD — \$250  
EXCELLENT — \$350



*Wm. R. Maertz Collection*

**DESCRIPTION:** Double Decal Heer officer's fiberglass parade helmet, smooth green paint, lightweight liner, silver eagle on left side and tri-color shield on right, wire mesh vents.

**AVAILABILITY:** Rare

**PRICE RANGE:** GOOD — \$200  
EXCELLENT — \$350





**DESCRIPTION:** Green felt Heer pith helmet, double metal insignia, lightweight liner, silver eagle on left side and tri-color shield on right.

**AVAILABILITY:** Common

**PRICE RANGE:** GOOD — \$45  
EXCELLENT — \$75



*Wm. R. Maertz Collection*

**DESCRIPTION:** Heer khaki brown canvas pith helmet, double metal insignia, lightweight liner, silver eagle on left side and tri-color shield on right.

**AVAILABILITY:** Common

**PRICE RANGE:** GOOD — \$40  
EXCELLENT — \$70





*Al Barrows Collection*

**DESCRIPTION:** M18 Double Decal Luftwaffe transitional, WWI style liner, early style Luftwaffe eagle on left side and tri-color shield on right, hand painted blue/gray finish.

**AVAILABILITY:** Very Rare

**AVERAGE PRICE:** \$500+



**DESCRIPTION:** M18 Double Decal Luftwaffe transitional, M31 liner, smooth gray paint, late style eagle on left side and tri-color shield on right.

**AVAILABILITY:** Rare

**PRICE RANGE:** GOOD — \$200  
EXCELLENT — \$350





Wm. R. Maertz Collection

**DESCRIPTION:** M35 Double Decal Luftwaffe, M31 liner, early style eagle on left side and tri-color shield on right, smooth gray paint.

**AVAILABILITY:** Scarce

**PRICE RANGE:** GOOD — \$100  
EXCELLENT — \$225



**DESCRIPTION:** M35 Double Decal Luftwaffe, M31 liner, late style eagle on left side and tri-color shield on right, smooth gray paint.

**AVAILABILITY:** Common

**PRICE RANGE:** GOOD — \$90  
EXCELLENT — \$200





Wm. R. Maertz Collection

**DESCRIPTION:** M40 Single Decal Luftwaffe, M31 liner, rough gray paint, late style Luftwaffe eagle on left side.

**AVAILABILITY:** Common

**PRICE RANGE:** GOOD — \$60  
EXCELLENT — \$85



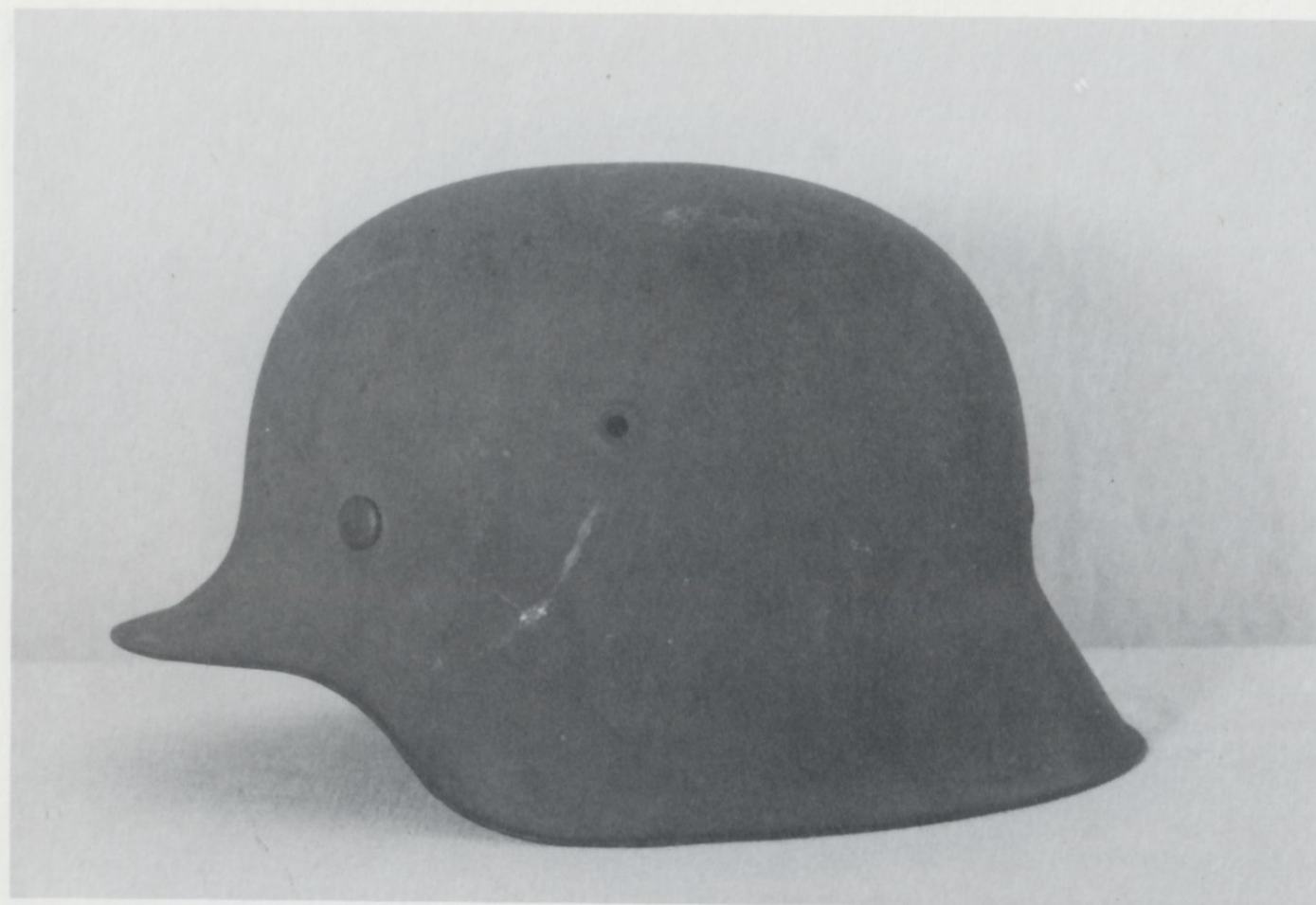
AVERAGE PRICE, \$750

**DESCRIPTION:** M42 Single Decal Luftwaffe, M31 liner, rough gray paint, late style Luftwaffe eagle on left side.

**AVAILABILITY:** Common

**PRICE RANGE:** GOOD — \$55  
EXCELLENT — \$85

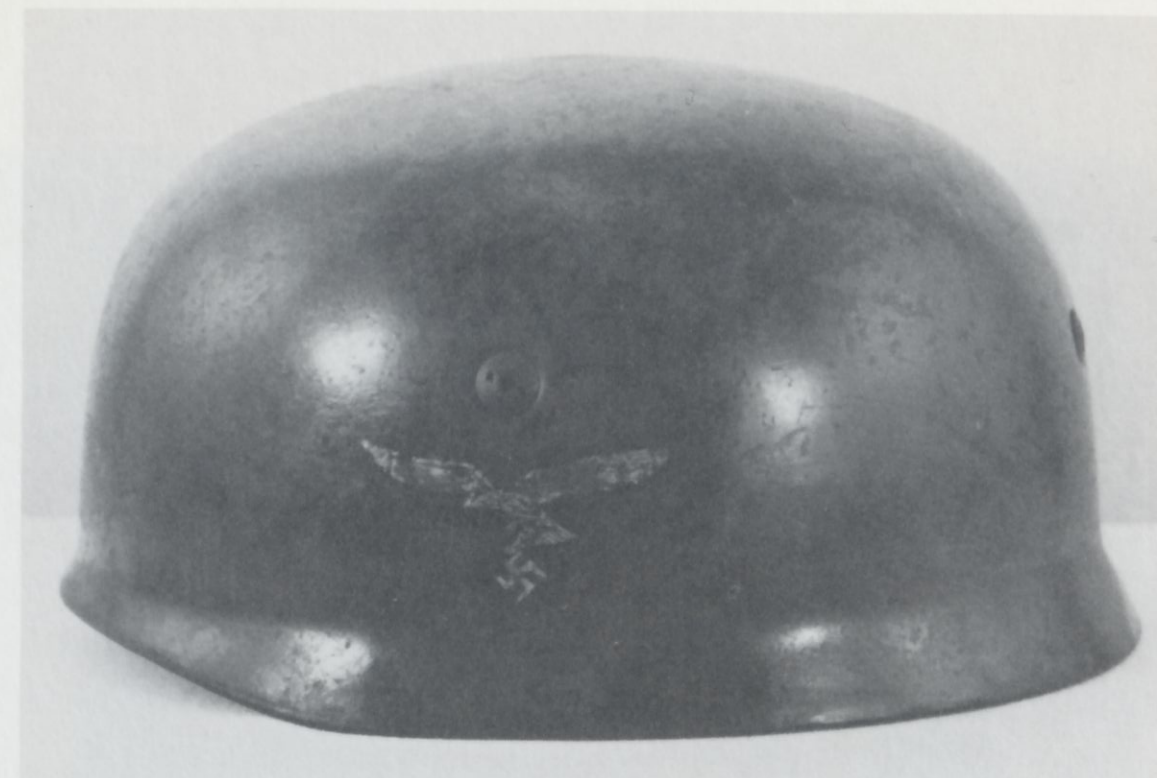




**DESCRIPTION:** M42 late war Luftwaffe, no decal, M31 liner, rough textured gray paint.

**AVAILABILITY:** Common

**PRICE RANGE:** GOOD — \$40  
EXCELLENT — \$65



**DESCRIPTION:** Double Decal Luftwaffe Paratrooper, standard paratrooper liner, early style bolts, smooth green paint, late style eagle on left side and tri-color shield on right.

**AVAILABILITY:** Very Rare

**AVERAGE PRICE:** \$750+



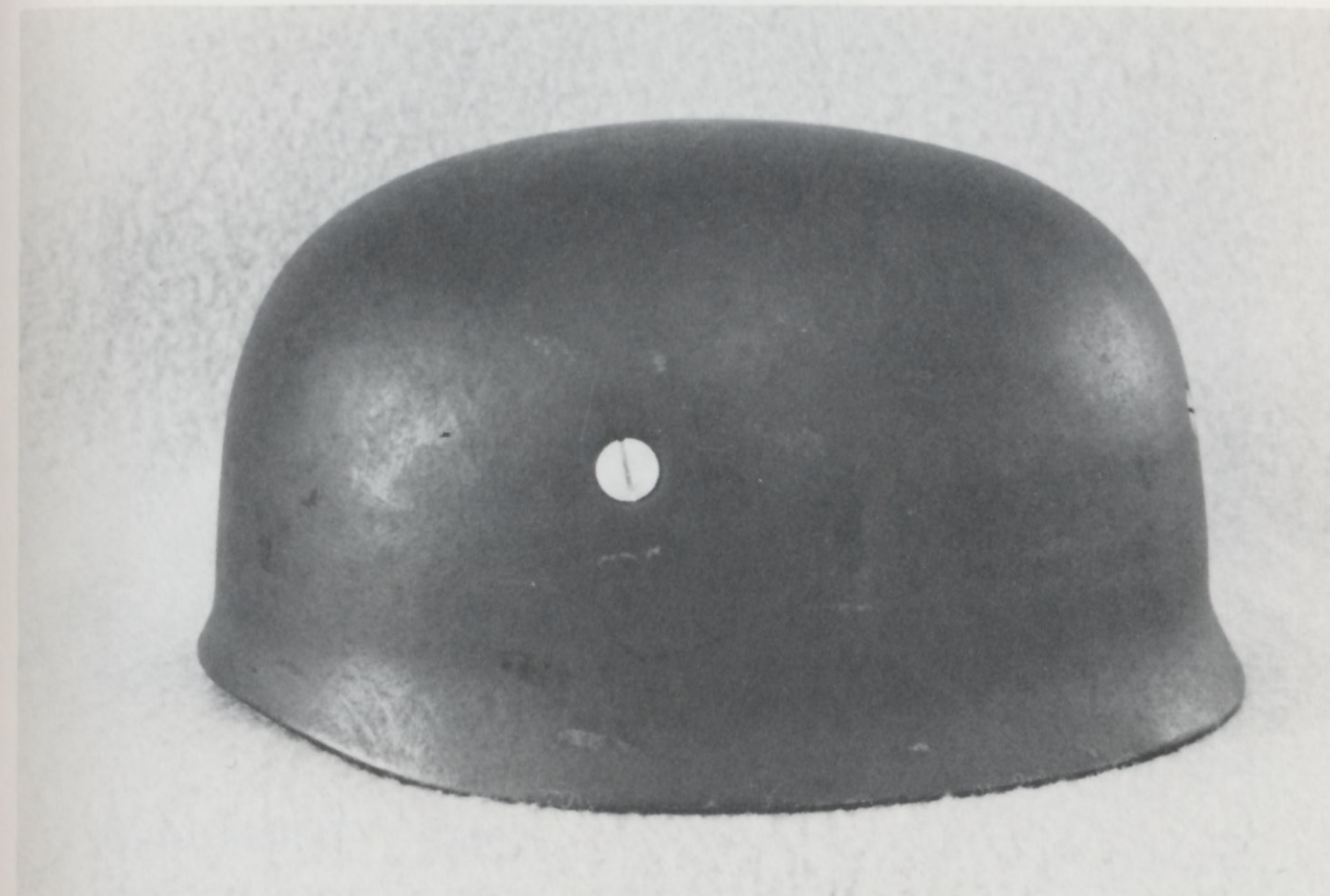




**DESCRIPTION:** Single Decal Luftwaffe Paratrooper, standard paratrooper liner, mid war style slotted bolts, rough green paint, late style Luftwaffe eagle on left side.

**AVAILABILITY:** Scarce

**PRICE RANGE:** GOOD — \$275  
EXCELLENT — \$425



*Wm. R. Maertz Collection*

**DESCRIPTION:** Late war Luftwaffe Paratrooper, no decal, standard paratrooper liner, late slotted bolts, rough gray/green paint.

**AVAILABILITY:** Scarce

**PRICE RANGE:** GOOD — \$175  
EXCELLENT — \$275





Jim Bandy Collection

**DESCRIPTION:** Double Decal Luftwaffe aluminum officer's parade helmet, smooth gray paint, lightweight liner, late eagle on left side and tri-color shield on right, four rivet construction.

**AVAILABILITY:** Rare

**PRICE RANGE:** GOOD — \$250  
EXCELLENT — \$400



**DESCRIPTION:** Luftwaffe pith helmet, green canvas, double metal insignia, lightweight liner, Luftwaffe eagle on left side and tri-color shield on right.

**AVAILABILITY:** Rare

**PRICE RANGE:** GOOD — \$125  
EXCELLENT — \$225







**DESCRIPTION:** Luftwaffe Fireman's helmet, double decal with Luftwaffe eagle on left side and tri-color shield on right, lightweight liner with neck flap, smooth black paint, white painted stripe encircles helmet.

**AVAILABILITY:** Scarce

**PRICE RANGE:** GOOD — \$90  
EXCELLENT — \$150



**DESCRIPTION:** Double Decal Waffen SS on Austrian shell, WWI style liner, handpainted green over black (originally issued as Allgemeine SS), early style runes on right side and party shield on left.

**AVAILABILITY:** Extremely Rare

**AVERAGE PRICE:** \$1000+







Al Barrows Collection

**DESCRIPTION:** Double Decal Allgemeine SS "droop bill" transitional, WWI style liner, smooth black paint, early style runes on right side and party shield on left.

**AVAILABILITY:** Very Rare

**PRICE RANGE:** GOOD — \$800  
EXCELLENT — \$1000



**DESCRIPTION:** M35 Double Decal Waffen SS, M31 liner, smooth green paint, early style runes on right side and party shield on left.

**AVAILABILITY:** Rare

**PRICE RANGE:** GOOD — \$550  
EXCELLENT — \$800





Al Barrows Collection

**DESCRIPTION:** M35 Double Decal Waffen SS, M31 liner, smooth green paint, late style runes on right side and party shield on left.

**AVAILABILITY:** Rare

**PRICE RANGE:** GOOD — \$550  
EXCELLENT — \$800



Al Barrows Collection

**DESCRIPTION:** M35 Double Decal Allgemeine SS, M31 liner, smooth black paint, early style runes on right side and party shield on left.

**AVAILABILITY:** Very Rare

**PRICE RANGE:** GOOD — \$700  
EXCELLENT — \$1000





**DESCRIPTION:** M40 Single Decal Waffen SS, M31 liner, rough green paint, late style runes on right side.

**AVAILABILITY:** Scarce

**PRICE RANGE:** GOOD — \$225  
EXCELLENT — \$350



**DESCRIPTION:** M42 Single Decal Waffen SS, M31 liner, rough green paint, late style runes on right side.

**AVAILABILITY:** Scarce

**PRICE RANGE:** GOOD — \$225  
EXCELLENT — \$350





*Jerry Sanders Collection*

**DESCRIPTION:** Double Decal SS "Sicherheitsdienst" light-weight helmet, Police style liner, smooth green paint, early style runes on right side and party shield on left.

**AVAILABILITY:** Rare

**PRICE RANGE:** GOOD — \$250  
EXCELLENT — \$500



*Al Barrows Collection*

**DESCRIPTION:** Double Decal Kriegsmarine M18 transitional, M31 liner, handpainted rough green, gold eagle on left side and tri-color shield on right.

**AVAILABILITY:** Rare

**PRICE RANGE:** GOOD — \$150  
EXCELLENT — \$300





**DESCRIPTION:** M35 Double Decal Kriegsmarine, M31 liner, smooth gray/green paint, gold eagle on left side and tri-color shield on right.

**AVAILABILITY:** Rare

**PRICE RANGE:** GOOD — \$125  
EXCELLENT — \$275

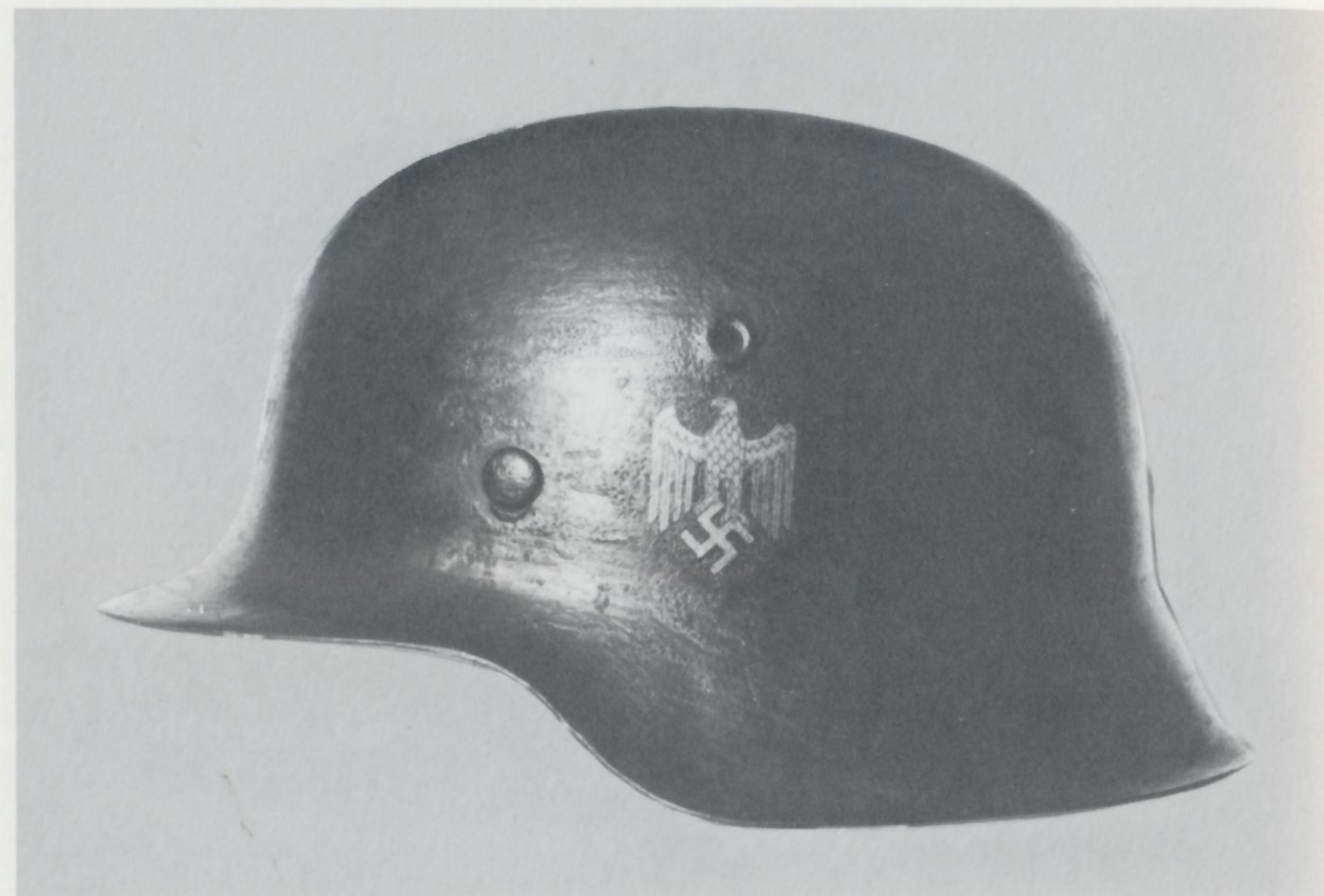


**DESCRIPTION:** M40 Single Decal Kriegsmarine, M31 liner, rough green paint, gold eagle on left side almost blends into paint.

**AVAILABILITY:** Scarce

**PRICE RANGE:** GOOD — \$75  
EXCELLENT — \$125





*Al Barrows Collection*

**DESCRIPTION:** M42 Single Decal Kriegsmarine, M31 liner, rough green paint, gold eagle on left side.

**AVAILABILITY:** Scarce

**PRICE RANGE:** GOOD — \$60  
EXCELLENT — \$110



**DESCRIPTION:** M40 Kriegsmarine no decal, hand painted battleship gray over original green paint, M31 liner marked "Cherbourg" in hand lettering on the leather.

**AVAILABILITY:** Scarce

**PRICE RANGE:** GOOD — \$60  
EXCELLENT — \$100





**DESCRIPTION:** Kriegsmarine pith helmet with double metal insignia on sides (gold eagle on left side and tri-color shield on right) and gold eagle on front, khaki brown canvas, lightweight liner.

**AVAILABILITY:** Scarce

**PRICE RANGE:** GOOD — \$100  
EXCELLENT — \$200



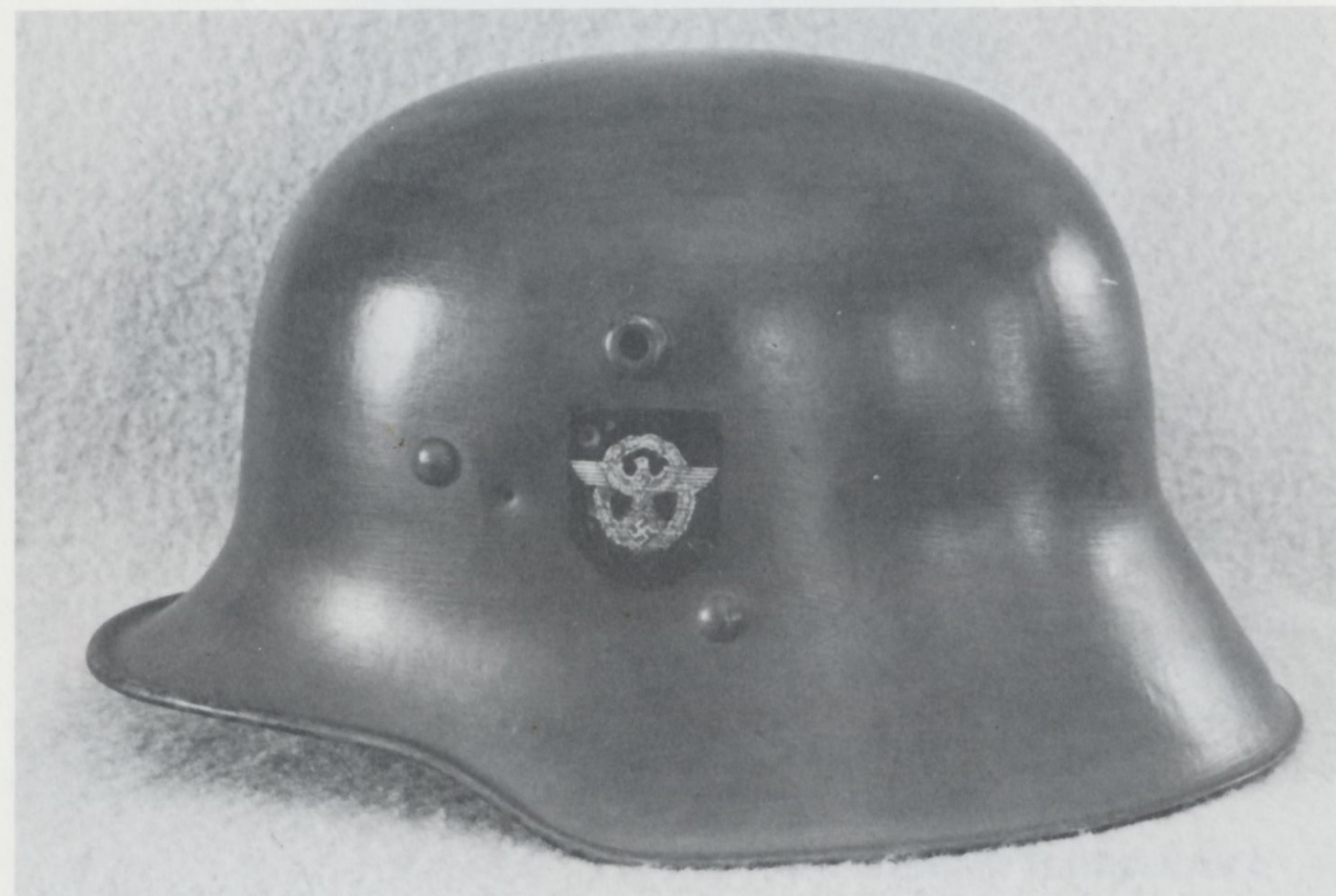
**DESCRIPTION:** Double Decal Combat Police on Austrian shell, WWI style liner, smooth dark green paint (almost black), silver borderless eagle on left side and party shield on right.

**AVAILABILITY:** Rare

**PRICE RANGE:** GOOD — \$150  
EXCELLENT — \$275







Wm. R. Maertz Collection

**DESCRIPTION:** Double Decal Combat Police on Austrian shell, WWI style liner, hand painted green, silver borderless eagle on left side and party shield on right, holes from original Austrian insignia show on left side.

**AVAILABILITY:** Rare

**PRICE RANGE:** GOOD — \$150  
EXCELLENT — \$250



Wm. R. Maertz Collection

**DESCRIPTION:** M35 Double Decal Combat Police, M31 liner, smooth green paint, silver borderless eagle on left side and party shield on right.

**AVAILABILITY:** Common

**PRICE RANGE:** GOOD — \$90  
EXCELLENT — \$150





**DESCRIPTION:** M40 Double Decal Combat Police, M31 liner, rough green paint, silver borderless eagle on left side and party shield on right.

**AVAILABILITY:** Common

**PRICE RANGE:** GOOD — \$85  
EXCELLENT — \$145



**DESCRIPTION:** M40 Double Decal Combat Police, M31 liner, smooth green paint, gold bordered Police eagle on left side and party shield on right (according to speculation by many collectors, gold Police eagles signify Water Protection Police).

**AVAILABILITY:** Scarce

**PRICE RANGE:** GOOD — \$100  
EXCELLENT — \$200





**DESCRIPTION:** M42 Double Decal Combat Police, M31 liner, rough gray/green paint, silver bordered eagle on left side and party shield on right.

**AVAILABILITY:** Scarce

**PRICE RANGE:** GOOD — \$100  
EXCELLENT — \$150



*Wm. R. Maertz Collection*

**DESCRIPTION:** M18 style Police, no decal, smooth black paint, single sets of seven hole vents each side, WWI style liner (note thick bottom rim).

**AVAILABILITY:** Scarce

**PRICE RANGE:** GOOD — \$60  
EXCELLENT — \$85





Wm. R. Maertz Collection

**DESCRIPTION:** Double Decal Civil Police, lightweight liner, smooth black paint, silver bordered eagle on left side and party shield on right, double set of seven hole vents each side.

**AVAILABILITY:** Common

**PRICE RANGE:** GOOD — \$40  
EXCELLENT — \$75



Wm. R. Maertz Collection

**DESCRIPTION:** Double Decal Civil Police, lightweight liner, smooth black paint, square dip visor, silver bordered eagle on left side and party shield on right, double set of seven hole vents each side.

**AVAILABILITY:** Common

**PRICE RANGE:** GOOD — \$40  
EXCELLENT — \$75





Wm. R. Maertz Collection

**DESCRIPTION:** Double Decal Civil Police, lightweight late war liner, smooth black paint, curved dip, silver bordered eagle on right side and party shield on left (reversed decals), double set of seven hole vents each side.

**AVAILABILITY:** Rare

**AVERAGE PRICE:** \$75+



Wm. R. Maertz Collection

**DESCRIPTION:** Double Decal Civil Police, lightweight liner, smooth green paint, silver borderless eagle on left side and party shield on right, single vent (Note: Helmet was originally painted black.)

**AVAILABILITY:** Scarce

**PRICE RANGE:** GOOD — \$60  
EXCELLENT — \$85





Wm. R. Maertz Collection

**DESCRIPTION:** Double Decal Fireman's helmet, smooth black paint, aluminum comb, lightweight liner, silver bordered eagle on left side and party shield on right, double set of seven hole vents each side.

**AVAILABILITY:** Common

**PRICE RANGE:** GOOD — \$50  
EXCELLENT — \$90



Wm. R. Maertz Collection

**DESCRIPTION:** Double Decal early Fireman's helmet, lightweight liner, smooth black paint, tilted swastika on right side and tilted tri-color shield on left, aluminum comb, double set of seven hole vents each side.

**AVAILABILITY:** Scarce

**PRICE RANGE:** GOOD — \$75  
EXCELLENT — \$100





Wm. R. Maertz Collection

**DESCRIPTION:** Double Decal Civil Police (reissued from Fireman's, holes for comb plugged), lightweight liner, smooth black paint, tilted swastika on right side and tri-color shield on left, salt shaker style vents, six rivet construction.

**AVAILABILITY:** Scarce

**PRICE RANGE:** GOOD — \$65  
EXCELLENT — \$90

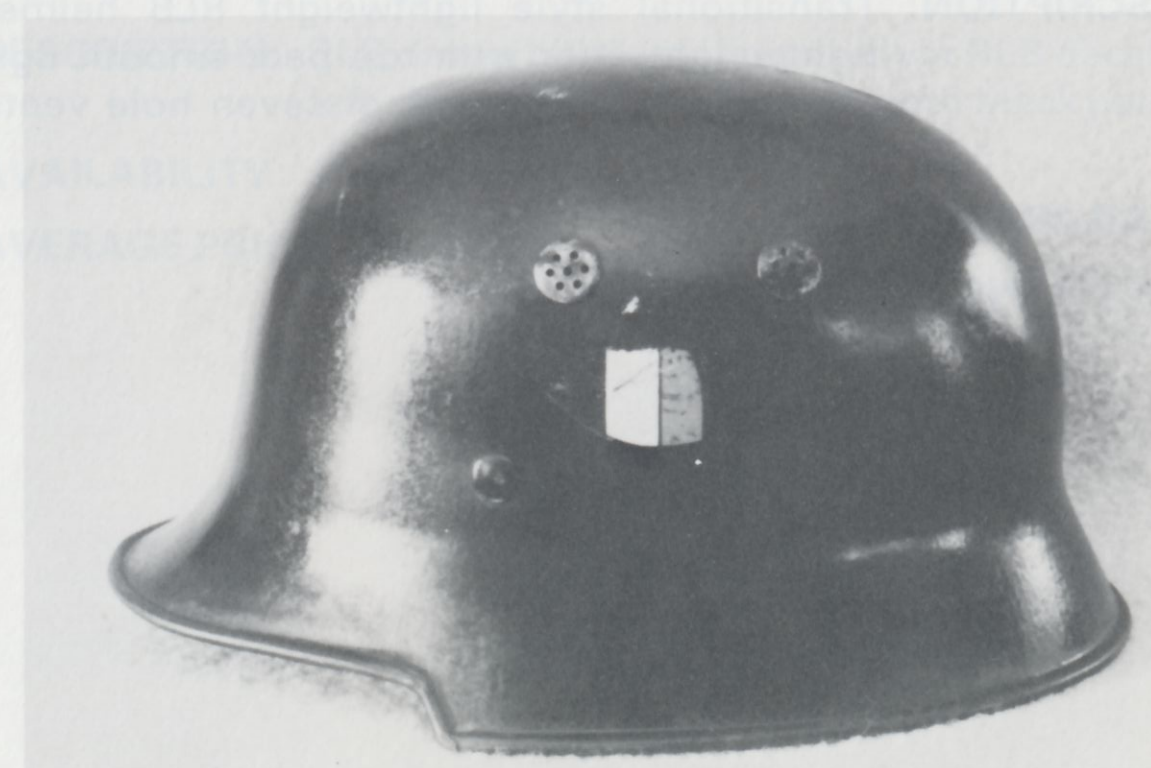


Wm. R. Maertz Collection

**DESCRIPTION:** Double Decal Civil Police, lightweight liner, smooth black paint, tilted swastika on right side and tri-color shield on left, salt shaker air vents, square dip, three rivet construction.

**AVAILABILITY:** Scarce

**PRICE RANGE:** GOOD — \$65  
EXCELLENT — \$95







**DESCRIPTION:** Transitional style lightweight RLB helmet, lightweight liner with top pad, smooth light green paint, double set of seven hole vents, four rivet construction.

**AVAILABILITY:** Rare

**PRICE RANGE:** GOOD — \$200  
EXCELLENT — \$350



*Al Barrows Collection*

**DESCRIPTION:** RLB droop bill transitional, silver RLB decal on left side, WWI style liner, smooth black paint.

**AVAILABILITY:** Very Rare

**AVERAGE PRICE:** \$300+





Wm. R. Maertz Collection

**DESCRIPTION:** Transitional style lightweight Luftschutz, lightweight liner, smooth dark blue paint, double set of seven hole vents each side, four rivet construction.

**AVAILABILITY:** Rare

**PRICE RANGE:** GOOD — \$75  
EXCELLENT — \$125



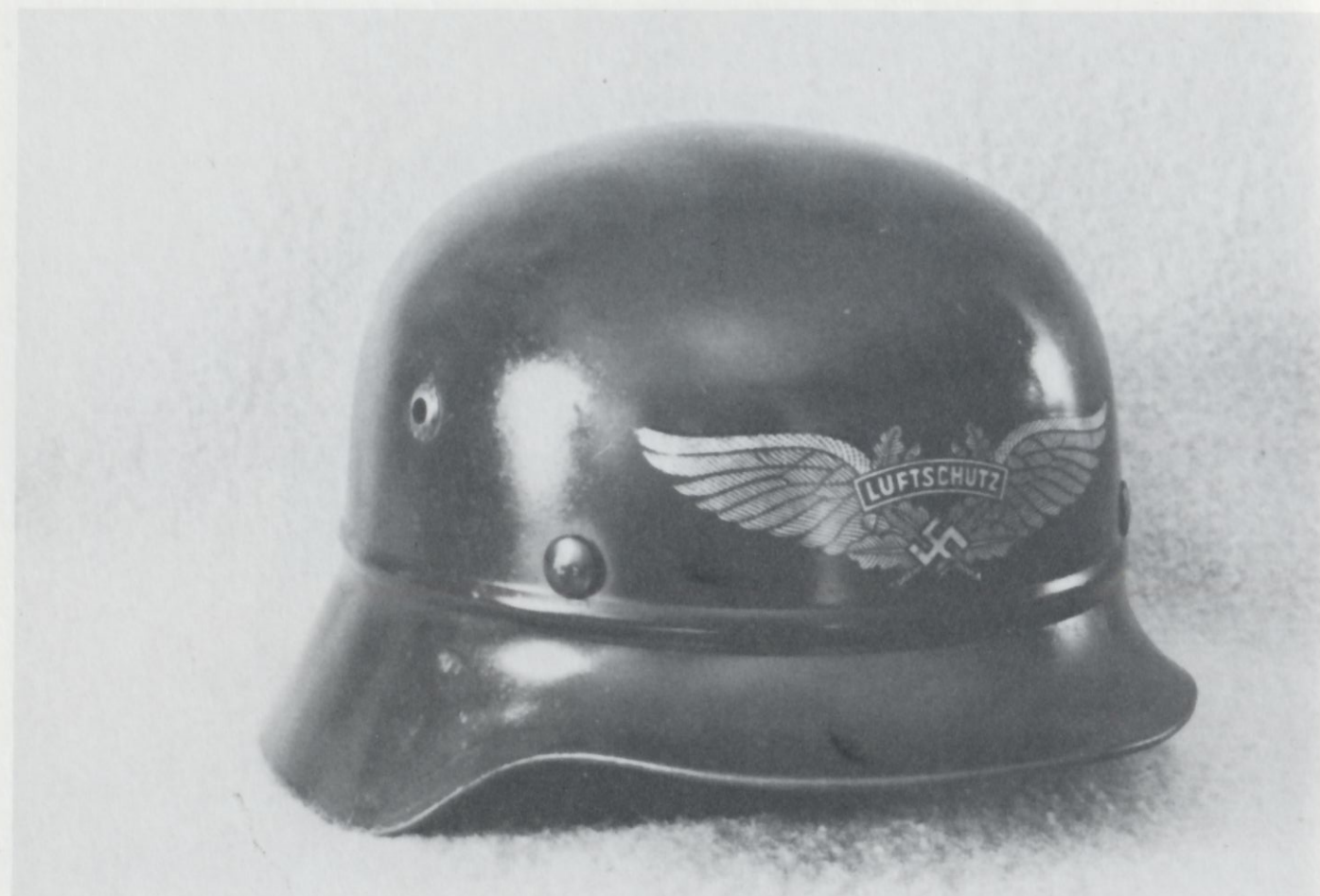
Wm. R. Maertz Collection

**DESCRIPTION:** Luftschutz square dip Police style helmet, lightweight liner, smooth dark blue paint, double set of seven hole vents each side.

**AVAILABILITY:** Scarce

**PRICE RANGE:** GOOD — \$60  
EXCELLENT — \$90





Wm. R. Maertz Collection

**DESCRIPTION:** M35 Luftschutz combat, M31 liner, smooth dark blue paint, ridge around circumference, silver Luftschutz decal on front.

**AVAILABILITY:** Common

**PRICE RANGE:** GOOD — \$60  
EXCELLENT — \$90



**DESCRIPTION:** M40 Luftschutz combat, M31 liner, smooth dark blue paint, ridge around circumference, silver Luftschutz decal on front.

**AVAILABILITY:** Common

**PRICE RANGE:** GOOD — \$55  
EXCELLENT — \$85





**DESCRIPTION:** M42 Luftschutz combat, lightweight canvas liner and plastic chinstrap, no decal, ridge around circumference.

**AVAILABILITY:** Scarce

**PRICE RANGE:** GOOD — \$50  
EXCELLENT — \$75



*Wm. R. Maertz Collection*

**DESCRIPTION:** M35 Double Decal Luftschutz Police, lightweight liner, smooth dark blue paint, remains of Luftschutz decal on front, silver borderless eagle on left side and party shield on right.

**AVAILABILITY:** Scarce

**PRICE RANGE:** GOOD — \$90  
EXCELLENT — \$130





Wm. R. Maertz Collection

**DESCRIPTION:** One piece Luftschutz gladiator style, light-weight liner, smooth dark blue paint, no decal, four rivet construction.

**AVAILABILITY:** Common

**PRICE RANGE:** GOOD — \$45  
EXCELLENT — \$75



Wm. R. Maertz Collection

**DESCRIPTION:** Two piece Luftschutz gladiator style, light-weight liner, smooth dark blue paint, single decal on front, ridge around circumference, three rivet construction.

**AVAILABILITY:** Common

**PRICE RANGE:** GOOD — \$40  
EXCELLENT — \$75





Wm. R. Maertz Collection

**DESCRIPTION:** Three piece Luftschutz gladiator style, light-weight liner, smooth dark blue paint, single decal on front, ridge around circumference, extra seam on side neckguard, four rivet construction.

**AVAILABILITY:** Common

**PRICE RANGE:** GOOD — \$40  
EXCELLENT — \$75



**DESCRIPTION:** Captured Russian helmet reissued to Luftschutz with single Luftschutz decal on front, original Russian green paint, liner, and chinstrap.

**AVAILABILITY:** Rare

**PRICE RANGE:** GOOD — \$75  
EXCELLENT — \$100





**DESCRIPTION:** Captured Czech helmet reissued to Luftschutz with single Luftschutz decal on front, original Czech brown paint, liner, and chinstrap.

**AVAILABILITY:** Rare

**PRICE RANGE:** GOOD — \$75  
EXCELLENT — \$90



Wm. R. Maertz Collection

**DESCRIPTION:** Captured French helmet reissued to Luftschutz with single Luftschutz decal on front, hand painted in blue/green color, with original French liner and strap.

**AVAILABILITY:** Rare

**PRICE RANGE:** GOOD — \$75  
EXCELLENT — \$95





*Al Barrows Collection*

**DESCRIPTION:** Double Decal Railway Police transitional, M31 liner, blue paint, silver and black Reichsbahn decal on left side and elongated party shield on right.

**AVAILABILITY:** Extremely Rare

**AVERAGE PRICE:** \$500+



**DESCRIPTION:** Single Decal Red Cross (DRK), Police style shell, lightweight liner, smooth gray paint, Red Cross decal on left side, double set of seven hole vents each side.

**AVAILABILITY:** Rare

**PRICE RANGE:** GOOD — \$150  
EXCELLENT — \$250

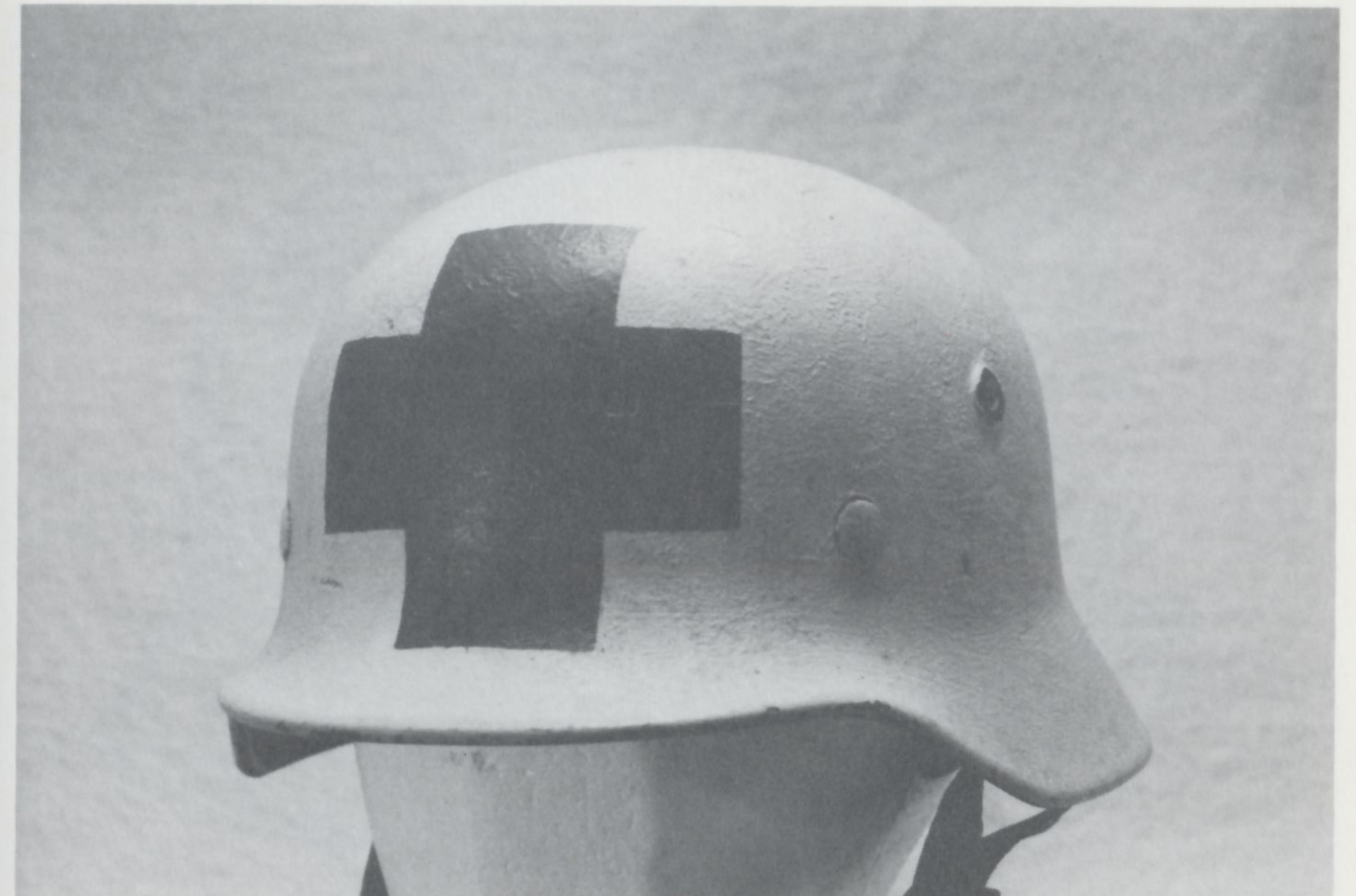




**DESCRIPTION:** M42 Red Cross, hand painted red crosses on front, back, and sides, hand painted tan over original army green paint, M31 liner.

**AVAILABILITY:** Scarce

**PRICE RANGE:** GOOD — \$75  
EXCELLENT — \$150



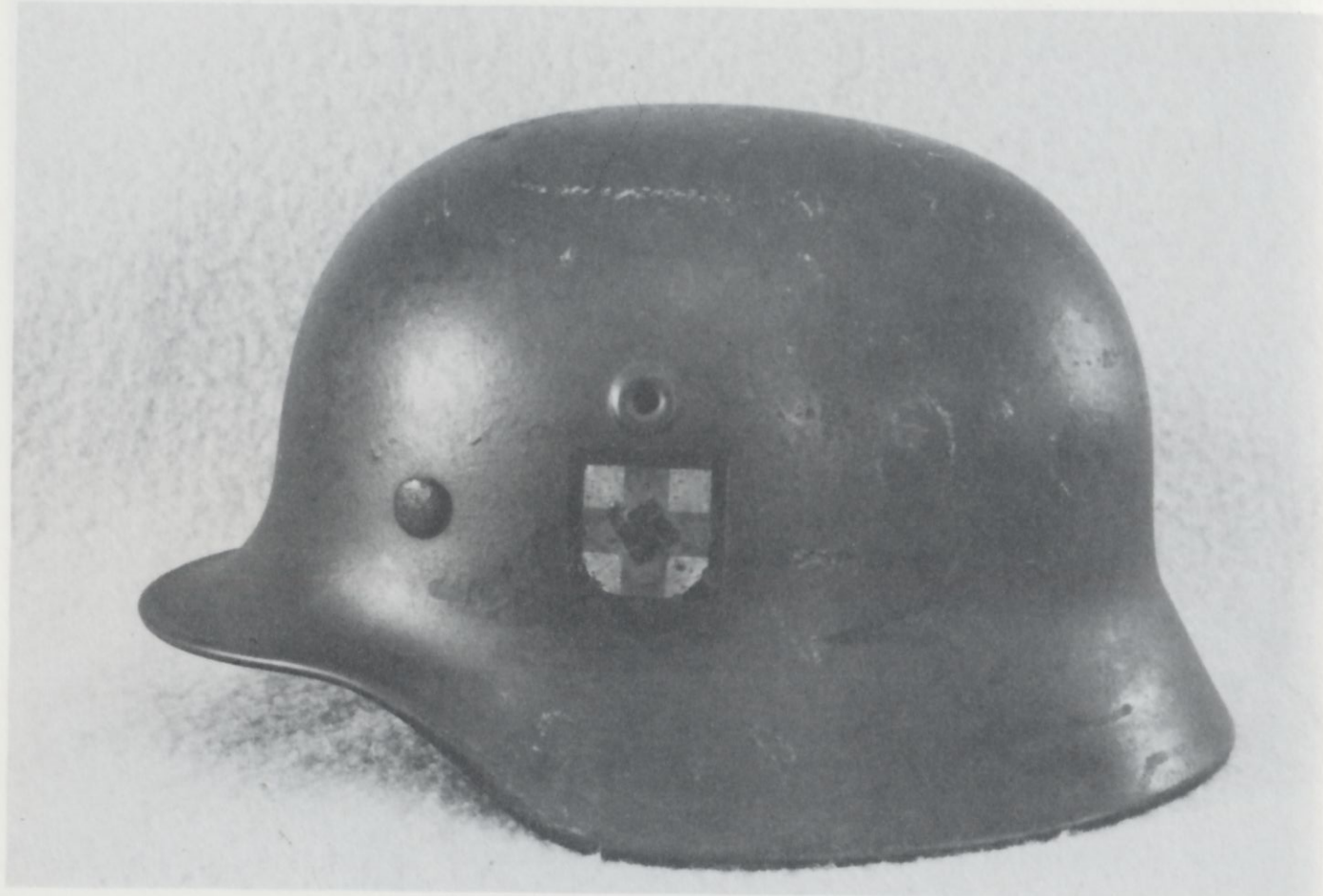
*Wm. R. Maertz Collection*

**DESCRIPTION:** M40 Red Cross, hand painted red cross on front, white paint over original army green, M31 liner.

**AVAILABILITY:** Scarce

**PRICE RANGE:** GOOD — \$75  
EXCELLENT — \$150





Wm. R. Maertz Collection

**DESCRIPTION:** M40 Double Decal Red Cross, M31 liner, Red Cross decal on left side over Heer decal, tri-color shield on right, (NOTE: This helmet taken from a German Field Hospital in Belgium by an American GI.)

**AVAILABILITY:** Very Rare

**AVERAGE PRICE:** \$150+



Al Barrows Collection

**DESCRIPTION:** M40 Single Decal RAD, M31 liner, rough green paint, silver RAD decal on left side applied over Heer decal (originally issued as single decal Heer).

**AVAILABILITY:** Rare

**PRICE RANGE:** GOOD — \$250  
EXCELLENT — \$350





**DESCRIPTION:** M42 Single Decal RAD, M31 liner, rough green paint, RAD decal on left side applied over Heer decal (originally issued as single decal Heer).

**AVAILABILITY:** Rare

**PRICE RANGE:** GOOD — \$250  
EXCELLENT — \$350



**DESCRIPTION:** Double Decal SA helmet on one piece Luftschutz style shell, lightweight liner with top pad, smooth brown spray paint, SA insignia on right side and political eagle on left.

**AVAILABILITY:** Very Rare

**PRICE RANGE:** GOOD — \$500  
EXCELLENT — \$750







**DESCRIPTION:** M35 Double Decal Feldherrnhalle, first pattern, M31 liner, originally issued as double decal Luftwaffe, overpainted in dark brown, with Feldherrnhalle decal on right side and late style Luftwaffe eagle on left.

**AVAILABILITY:** Extremely Rare

**AVERAGE PRICE:** \$1500+



*Dr. Ron Distelhorst Collection*

**DESCRIPTION:** M35 Double Decal Feldherrnhalle, second style, M31 liner, smooth brown paint over gray double decal Luftwaffe, Feldherrnhalle decal on left side and swastika shield on right.

**AVAILABILITY:** Extremely Rare

**AVERAGE PRICE:** \$1500+







*Al Barrows Collection*

**DESCRIPTION:** M40 Double Decal NSKK, M31 liner, rough green paint, silver NSKK eagle on left side and tri-color shield on right.

**AVAILABILITY:** Rare

**PRICE RANGE:** GOOD — \$400  
EXCELLENT — \$600



**DESCRIPTION:** M42 Double Decal NSKK, M31 liner, spray painted green over original Luftwaffe gray, silver NSKK eagle on left side and tri-color shield on right.

**AVAILABILITY:** Very Rare

**PRICE RANGE:** GOOD — \$400  
EXCELLENT — \$600

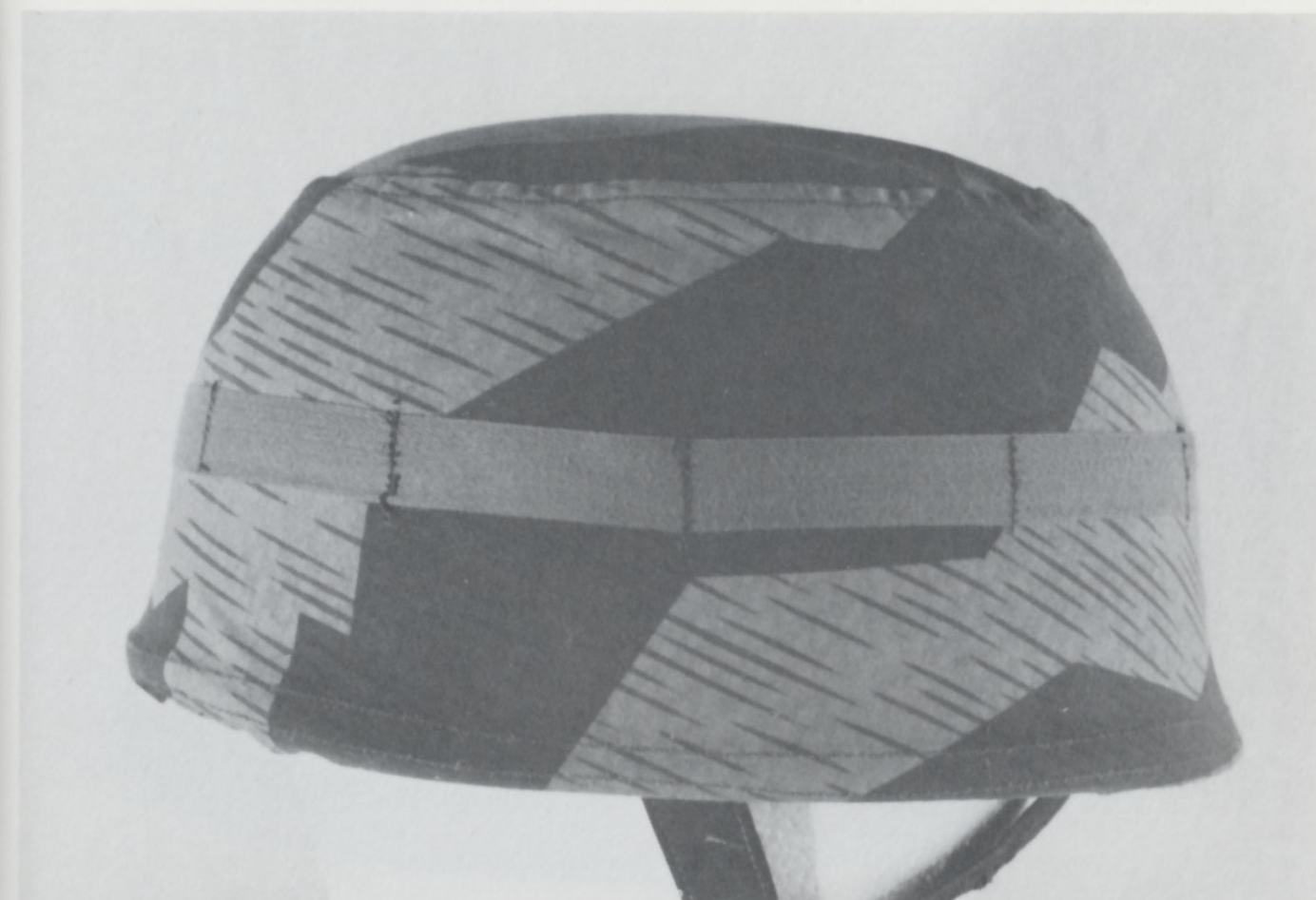




**DESCRIPTION:** SS camouflage cover, three spring clips for attachment to the helmet, shades of brown for Fall reversible to shades of green for Spring.

**AVAILABILITY:** Scarce

**PRICE RANGE:** GOOD — \$175  
EXCELLENT — \$250

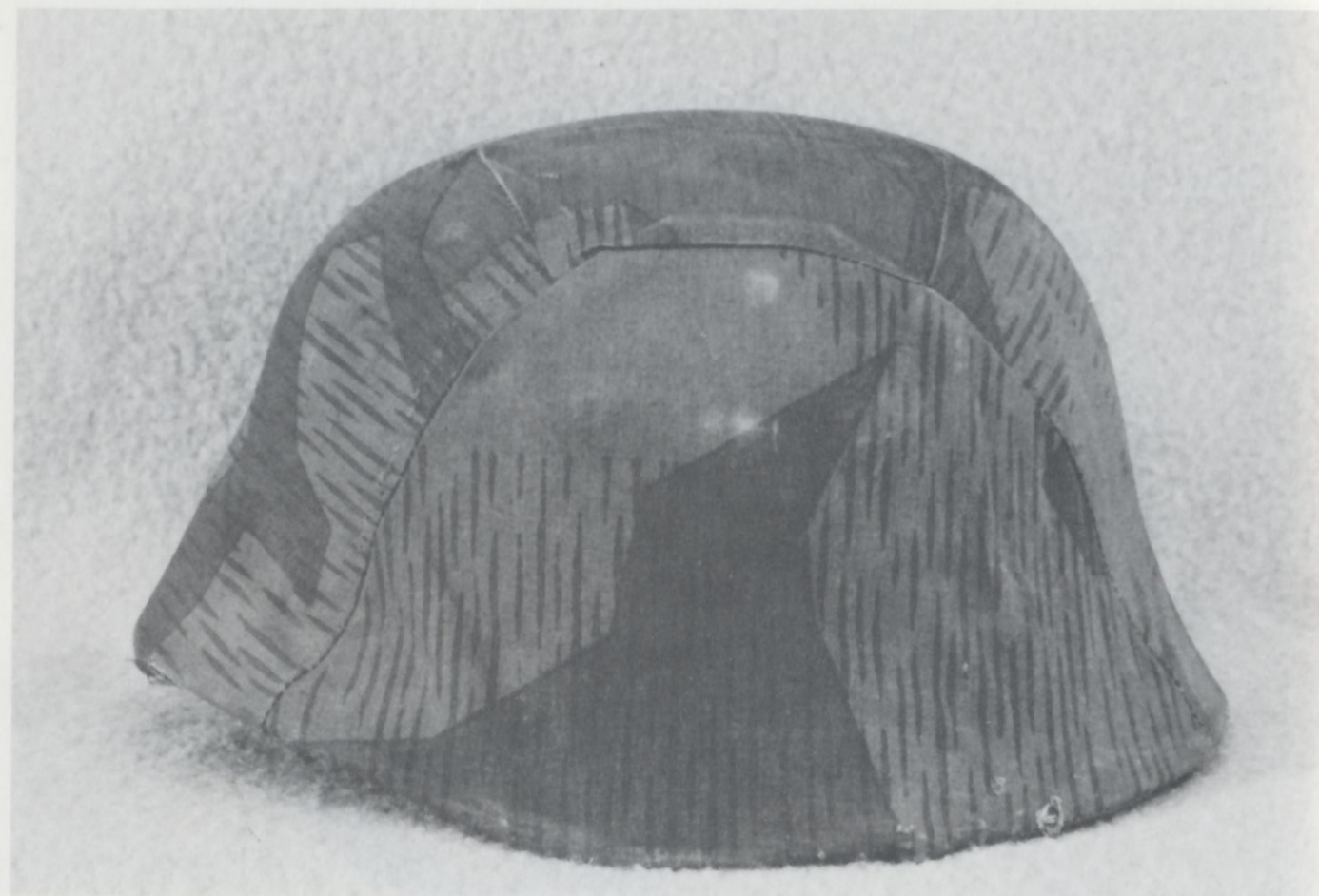


**DESCRIPTION:** Paratrooper camouflage cover, loops for attaching foliage, drawstring in bottom for holding cover on the helmet, RB Nr. inside.

**AVAILABILITY:** Scarce

**PRICE RANGE:** GOOD — \$100  
EXCELLENT — \$200





Wm. R. Maertz Collection

**DESCRIPTION:** Field made Heer splinter pattern camouflage cover, non-reversible, no drawstring in bottom, cut and sewn to snugly fit helmet shell.

**AVAILABILITY:** Scarce

**PRICE RANGE:** GOOD — \$65  
EXCELLENT — \$125



**DESCRIPTION:** Single Decal Luftwaffe paratrooper helmet with rough brown camouflage paint and baling wire around circumference, decal painted around, (NOTE: This helmet was found on the beach at Anzio by an American GI.)

**AVAILABILITY:** Rare

**PRICE RANGE:** GOOD — \$350  
EXCELLENT — \$600





**DESCRIPTION:** M35 Single Decal Luftwaffe, camouflaged in shades of brown, amber, and yellow (Fall colors), single decal painted over so it is barely showing.

**AVAILABILITY:** Scarce

**PRICE RANGE:** GOOD — \$85  
EXCELLENT — \$150



**DESCRIPTION:** M42 Single Decal Heer, camouflaged in shades of green and brown (Spring colors), Heer decal on left side partially visible through camouflage paint.

**AVAILABILITY:** Scarce

**PRICE RANGE:** GOOD — \$85  
EXCELLENT — \$150





*Jim Bandy Collection*

**DESCRIPTION:** M40 Single Decal Luftwaffe with large mesh chicken wire cover, fastened with clips to shell rim.

**AVAILABILITY:** Scarce

**PRICE RANGE:** GOOD — \$125  
EXCELLENT — \$200

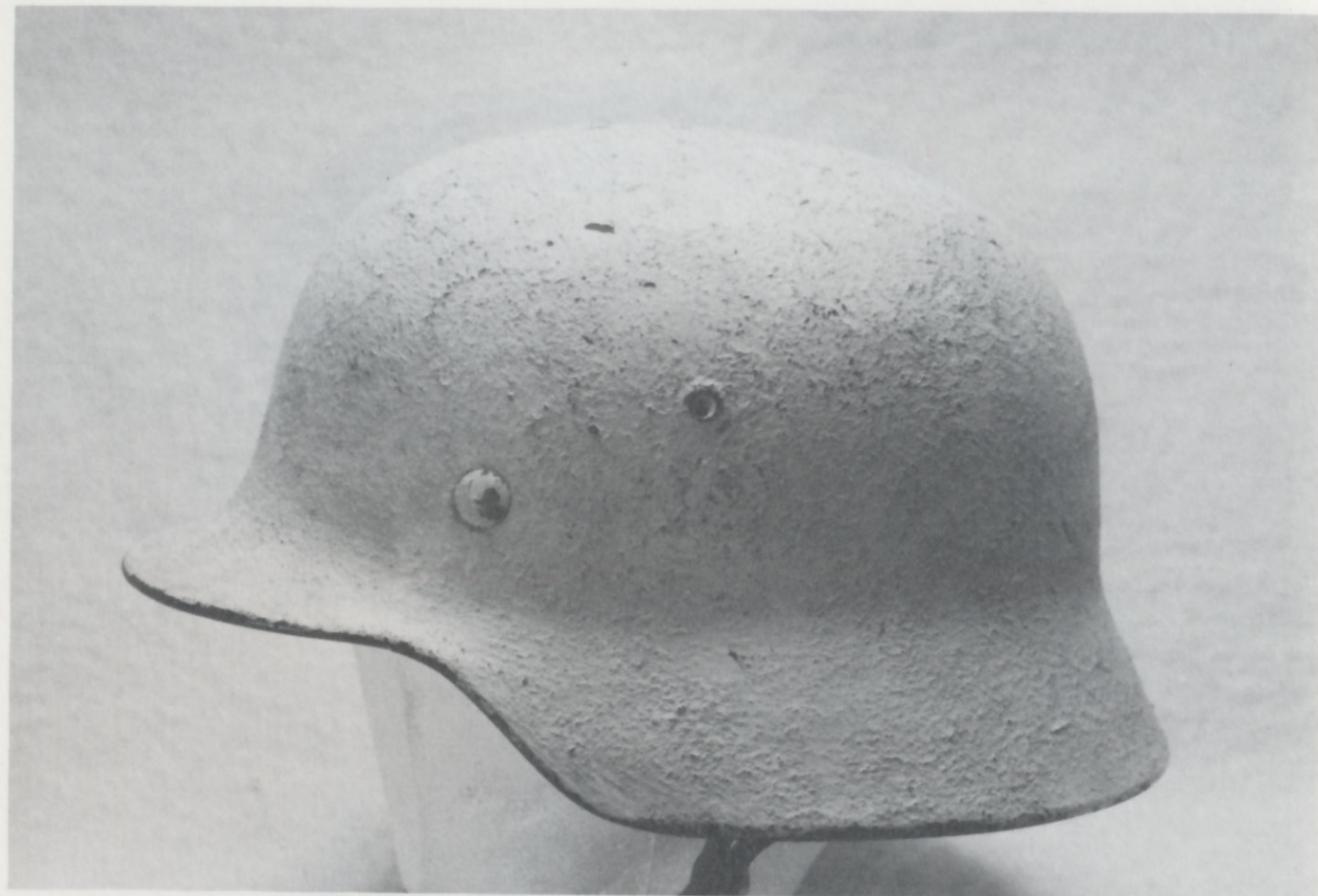


**DESCRIPTION:** M40 Heer with small mesh chicken wire cover, no decal, camouflage paint in shades of brown and amber, wire fastened by crude hooks made of baling wire, army green paint inside.

**AVAILABILITY:** Scarce

**PRICE RANGE:** GOOD — \$100  
EXCELLENT — \$150





**DESCRIPTION:** M35 rough textured white paint for snow camouflage, no decal visible through paint, army green paint inside.

**AVAILABILITY:** Scarce

**PRICE RANGE:** GOOD — \$85  
EXCELLENT — \$150



*Wm. R. Maertz Collection*

**DESCRIPTION:** M42 Single Decal Luftwaffe, white snow camouflage, Luftwaffe eagle carefully painted around, "painted" with whitewash (which could be removed when season changed).

**AVAILABILITY:** Scarce

**PRICE RANGE:** GOOD — \$100  
EXCELLENT — \$175

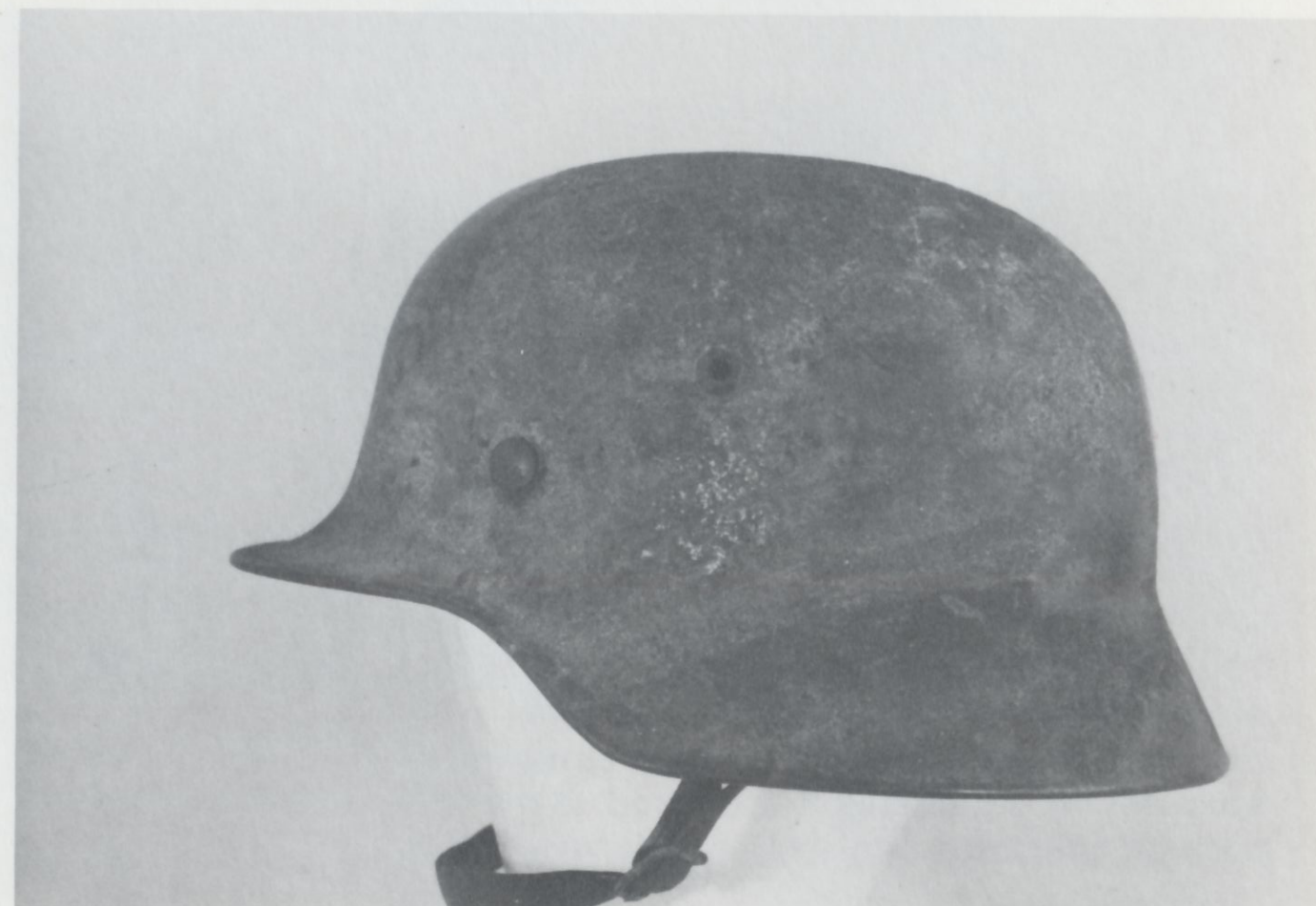




**DESCRIPTION:** M35 Single Decal Heer with "splatters" of tan camouflage paint, most of eagle showing, smooth army green paint under camouflage paint.

**AVAILABILITY:** Scarce

**PRICE RANGE:** GOOD — \$90  
EXCELLENT — \$150



**DESCRIPTION:** M35 Single Decal Heer with sand camouflage (sand mixed with light brown paint), (NOTE: This helmet was found by an American GI on a beach in Italy), single Heer decal barely shows through paint.

**AVAILABILITY:** Scarce

**PRICE RANGE:** GOOD — \$100  
EXCELLENT — \$175





*Jim Bandy Collection*

**DESCRIPTION:** Single Decal Luftwaffe paratrooper with tan camouflage paint for tropical area, most of eagle shows through camouflage paint.

**AVAILABILITY:** Rare

**PRICE RANGE:** GOOD — \$500  
EXCELLENT — \$750



**DESCRIPTION:** M40 Double Decal Combat Police, camouflaged with mustard brown paint, (NOTE: This helmet was liberated in Africa by an American GI), silver bordered Police eagle on left side and party shield on right carefully painted around.

**AVAILABILITY:** Very Rare

**AVERAGE PRICE:** \$250+







**DESCRIPTION:** M35 Double Decal Heer with mustard brown camouflage paint, most of eagle and tri-color shield showing, used in tropical area.

**AVAILABILITY:** Scarce

**PRICE RANGE:** GOOD — \$120  
EXCELLENT — \$200



*Jim Bandy Collection*

**DESCRIPTION:** M40 Single Decal Luftwaffe with tan camouflage paint, eagle showing through paint, for use in tropical areas.

**AVAILABILITY:** Scarce

**PRICE RANGE:** GOOD — \$90  
EXCELLENT — \$150





Wm. R. Maertz Collection

**DESCRIPTION:** M35 Single Decal Heer, tan camouflage paint over army green, hand painted Afrika Korps insignia on right side, Heer decal on left, (NOTE: This helmet was taken from a destroyed German tank in Africa by an American GI.)

**AVAILABILITY:** Very Rare

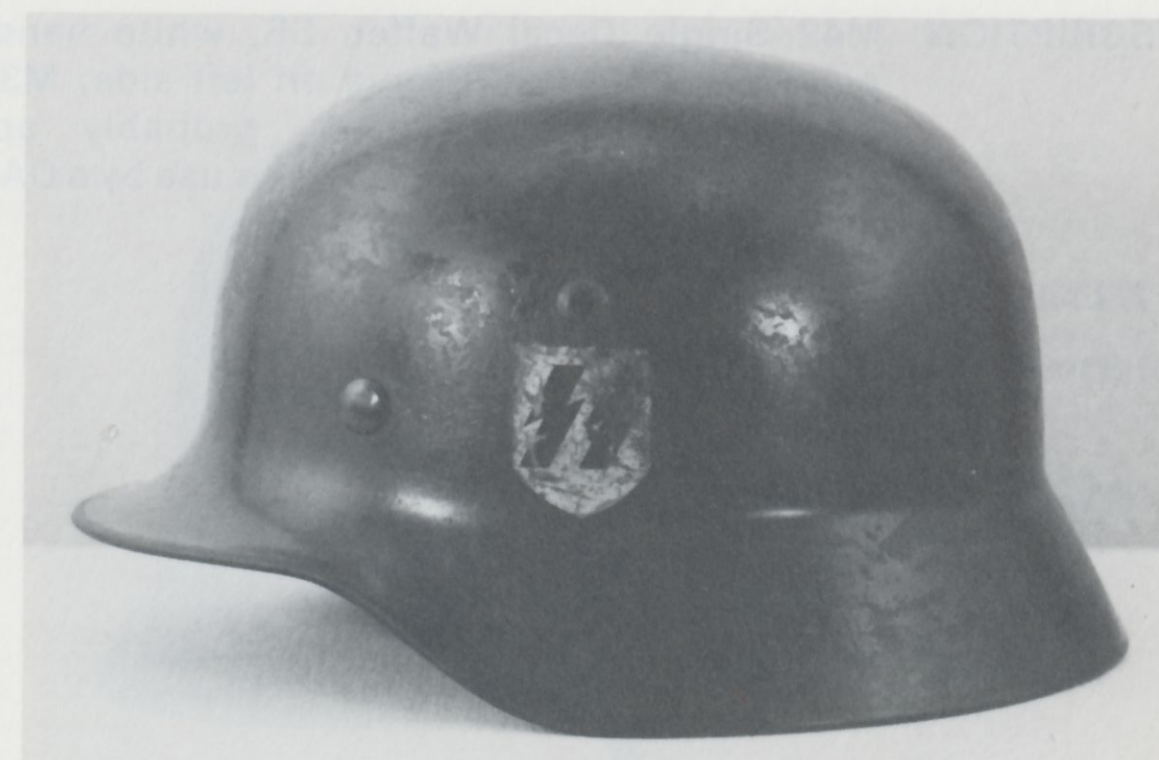
**PRICE RANGE:** GOOD — \$200  
EXCELLENT — \$350



**DESCRIPTION:** M35 Double Decal Waffen SS, runic shields on both sides (left runic shield applied over original party shield), smooth green paint, M31 liner, possibly used by foreign volunteers in the SS.

**AVAILABILITY:** Extremely Rare

**AVERAGE PRICE:** \$800+







**DESCRIPTION:** M42 Single Decal Waffen SS, white hand-painted DAF gear insignia on left side, M31 liner, rough green paint, probably appropriated and "customized" for use by a DAF member.

**AVAILABILITY:** Very Rare

**AVERAGE PRICE:** \$400+



**DESCRIPTION:** M35 Reichswehr helmet, handpainted olive green over original army green, both Reichswehr insignia painted by hand, M31 liner, "reissued" for use by German "home guard" units, shield is black-white-red.

**AVAILABILITY:** Rare

**AVERAGE PRICE:** \$100+





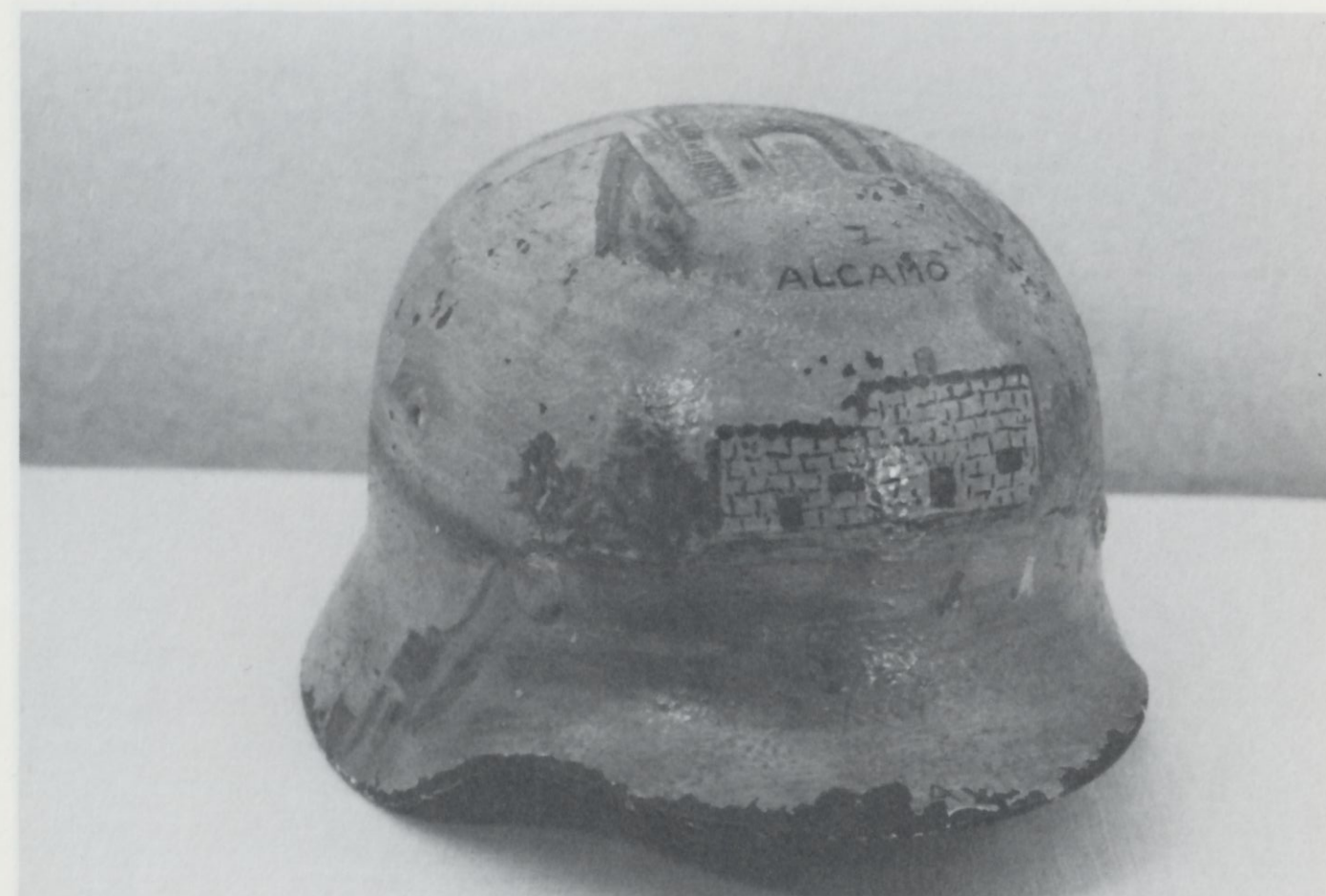


*Al Barrows Collection*

**DESCRIPTION:** Single Decal Heer on WWI Hungarian shell, reissued to German troops around 1940, rough gray/green paint, M31 German liner specially modified to fit Hungarian shell, cut down German rivets to fit small holes.

**AVAILABILITY:** Very Rare

**AVERAGE PRICE:** \$150+



**DESCRIPTION:** M40 no decal, painted with a scene of Alcamo, Sicily—so called "soldier art" piece, on a Luftwaffe gray shell.

**AVAILABILITY:** Scarce

**PRICE RANGE:** GOOD — \$65  
EXCELLENT — \$125





**DESCRIPTION:** M40 helmet sprayed in bright orange paint, Luftwaffe gray inside, M31 liner, purpose of orange paint unknown.

**AVAILABILITY:** Rare

**AVERAGE PRICE:** Unknown



*Wm. R. Maertz Collection*

**DESCRIPTION:** M40 combat helmet, rough green paint, single Heer decal on front, M31 liner. Possibly used by Volksturm units, or by officer cadets. No documentation available to support these theories.

**AVAILABILITY:** Rare

**PRICE RANGE:** GOOD — \$90  
EXCELLENT — \$125





Wm. R. Maertz Collection

**DESCRIPTION:** Lightweight Police style helmet, light gray paint, single Heer decal on front, lightweight liner, square dip visor, double set of seven hole vents each side. Possibly used by officer cadets.

**AVAILABILITY:** Rare

**PRICE RANGE:** GOOD — \$90  
EXCELLENT — \$125



Wm. R. Maertz Collection

**DESCRIPTION:** M42 Double Decal Luftwaffe, Luftwaffe eagles on both sides, rough gray paint, M31 liner. Use unknown.

**AVAILABILITY:** Rare

**AVERAGE PRICE:** \$100





Wm. R. Maertz Collection

**DESCRIPTION:** M16 Freikorps, handpainted swastika on front, rust color camouflage over army green, WWI style liner, used by early Party members in 1920's and 1930's.

**AVAILABILITY:** Very Rare

**AVERAGE PRICE:** \$150+



Al Barrows Collection

**DESCRIPTION:** M42 Single Decal Volkstrum "Sauerland" helmet, M31 liner, rough gray paint, used by "home guard" units in Sauerland region in late 1944 - 1945.

**AVAILABILITY:** Very Rare

**AVERAGE PRICE:** \$450+





Wm. R. Maertz Collection

**DESCRIPTION:** Variant style civil Police, no decal, smooth black paint, lightweight liner, wide red painted band around circumference, use unknown.

**AVAILABILITY:** Rare

**AVERAGE PRICE:** \$75



Wm. R. Maertz Collection

**DESCRIPTION:** M16 style toy helmet, Double Decal Heer, smooth green paint, white cloth liner, silver eagle on left side and tri-color shield on right.

**AVAILABILITY:** Rare

**PRICE RANGE:** GOOD — \$75  
EXCELLENT — \$125







**DESCRIPTION:** M35 style toy helmet, Double Decal Heer, paper liner, smooth green paint, silver eagle on left side and tri-color shield on right.

**AVAILABILITY:** Rare

**PRICE RANGE:** GOOD — \$65  
EXCELLENT — \$100

## BIBLIOGRAPHY

Bender, R.J. and Taylor, H.P.: Waffen SS (Volume I), R. James Bender Publishing, 1971.

Bozich, S.: German Relics (Supplement 2 - Headgear), USA, 1968.

Davis, B.L.: German Army Uniforms and Insignia 1933-1945, The World Publishing Co., New York, 1972.

"Militaria", Volume I #2, May-June 1971.

"Militaria", Volume III #1, July-August 1971.

Tubbs, F.: Stahlhelm, USA, 1971.

Wenn Alle Bruder Schweigen, Munin-Verlag GmbH, Ornabruck, Germany, 1975



## COLOPHON

This book was printed at  
Creative Printers, Inc., Quincy, IL  
for T. V. Goodapple and R. J. Weinand

*Body paper:* 60# Patina Matte  
*Cover paper:* 10 pt. C1S Cover  
*Ink:* Four color process plus 185 Red and varnish  
*Type style:* Universe  
*Press:* Miehle 25", single color  
*Binding:* Perfect bound  
*Page size:* 6 × 9, 144 pages plus cover